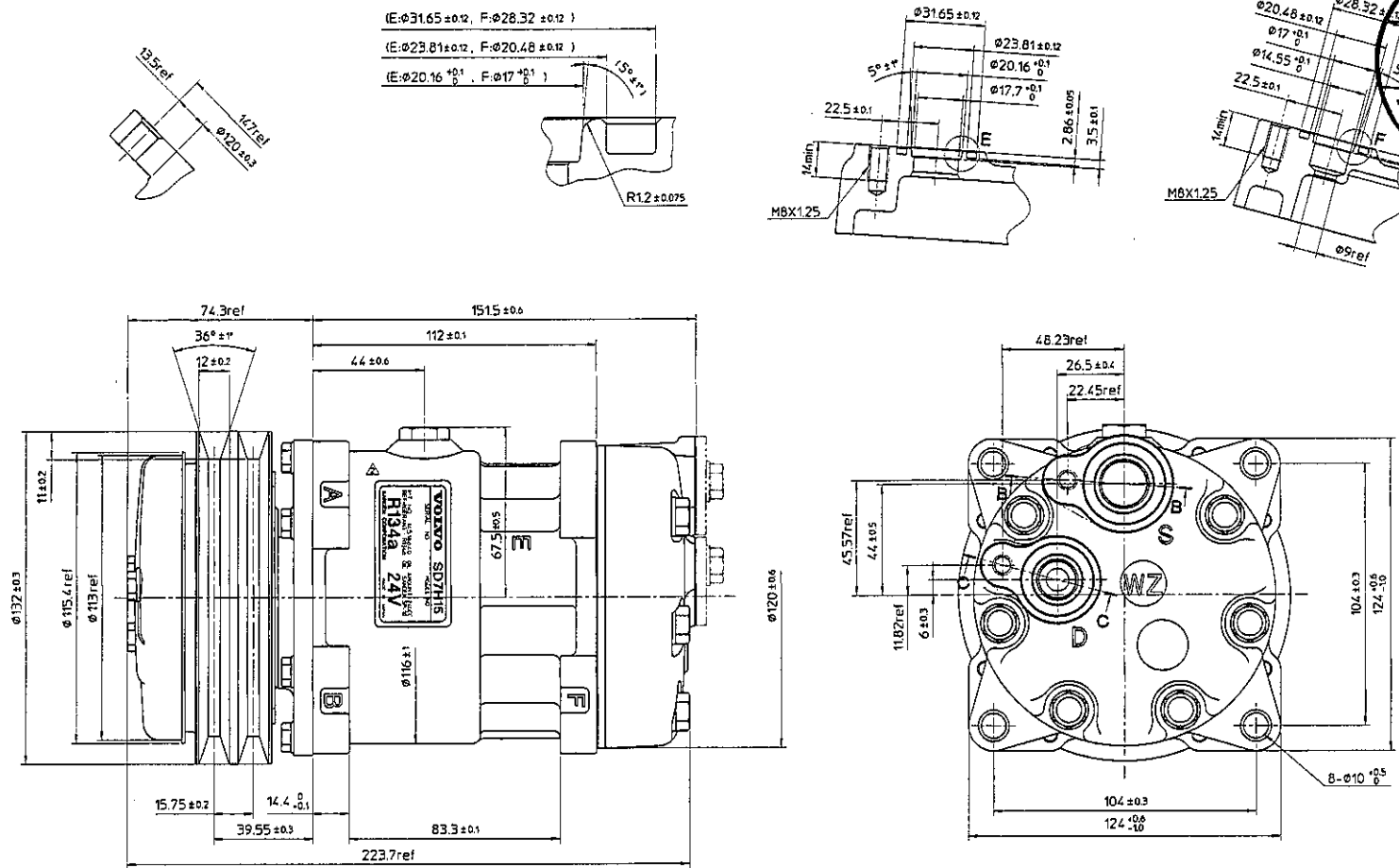


PARTIAL SECT. A-A

DETAIL OF E,F (5:1)

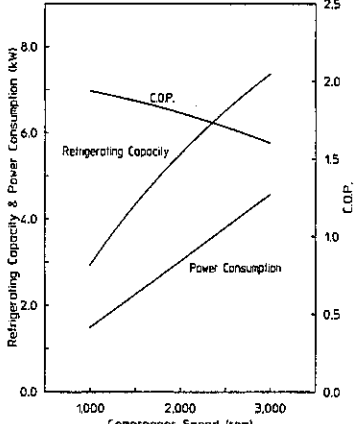
PARTIAL SECT. B-B

PARTIAL SECT. C-C



非管理文書  
 03.11.10  
 サンデン  
 株式会社

Pressure Dis/Suc : 1.67(MPa)/196(kPa)(gauge)  
 Sub Cool/Super Heat : 0/10(K)



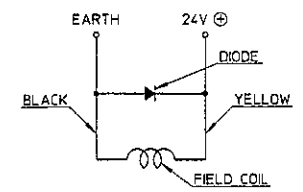
COMPRESSOR SPECIFICATIONS

BORE	$\phi 29.3$ mm
STROKE	32.8 mm
NUMBER OF CYLINDERS	7
DISPLACEMENT PER REVOLUTION	154.9 cm <sup>3</sup> /rev.
MAXIMUM ALLOWABLE CONTINUOUS SPEED	5000 r.p.m.
MAXIMUM DOWNSHIFT SPEED	5000 r.p.m.
REFRIGERANT	R-134a
OIL	SP-10 OR EQUIV
OIL CHARGE	240 cm <sup>3</sup>
ROTATION	CLOCKWISE
WEIGHT	kg

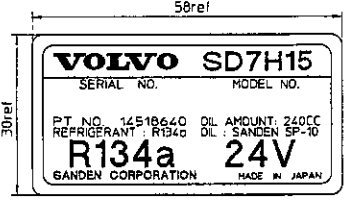
CLUTCH SPECIFICATIONS

RATED VOLTAGE	DC 24 V
MINIMUM BREAKAWAY TORQUE	34 N·m
MINIMUM ENGAGEMENT VOLTAGE	DC 16 V
MAXIMUM POWER CONSUMPTION	42 W
MAXIMUM ALLOWABLE CONTINUOUS SPEED	5000 r.p.m.
MAXIMUM DOWNSHIFT SPEED	5000 r.p.m.
BELT TYPE	A TYPE
PULLEY DIAMETER	$\phi 132$ mm
WEIGHT	kg

CIRCUIT DIAGRAM



LABEL(2:1)



DESIGNED BY	DATE	5 Nov 2003	MODEL	SD7H15WZ8152
CHECKED BY	DATE	5 Nov 2003	DRAWING NO	8152 - 6000
APPROVED BY	DATE	5 Nov 2003		A
REVISION RECORD				