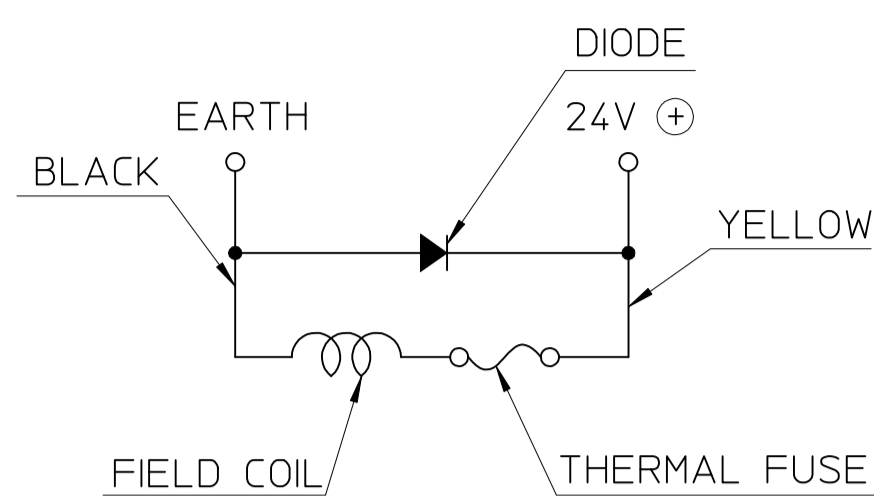
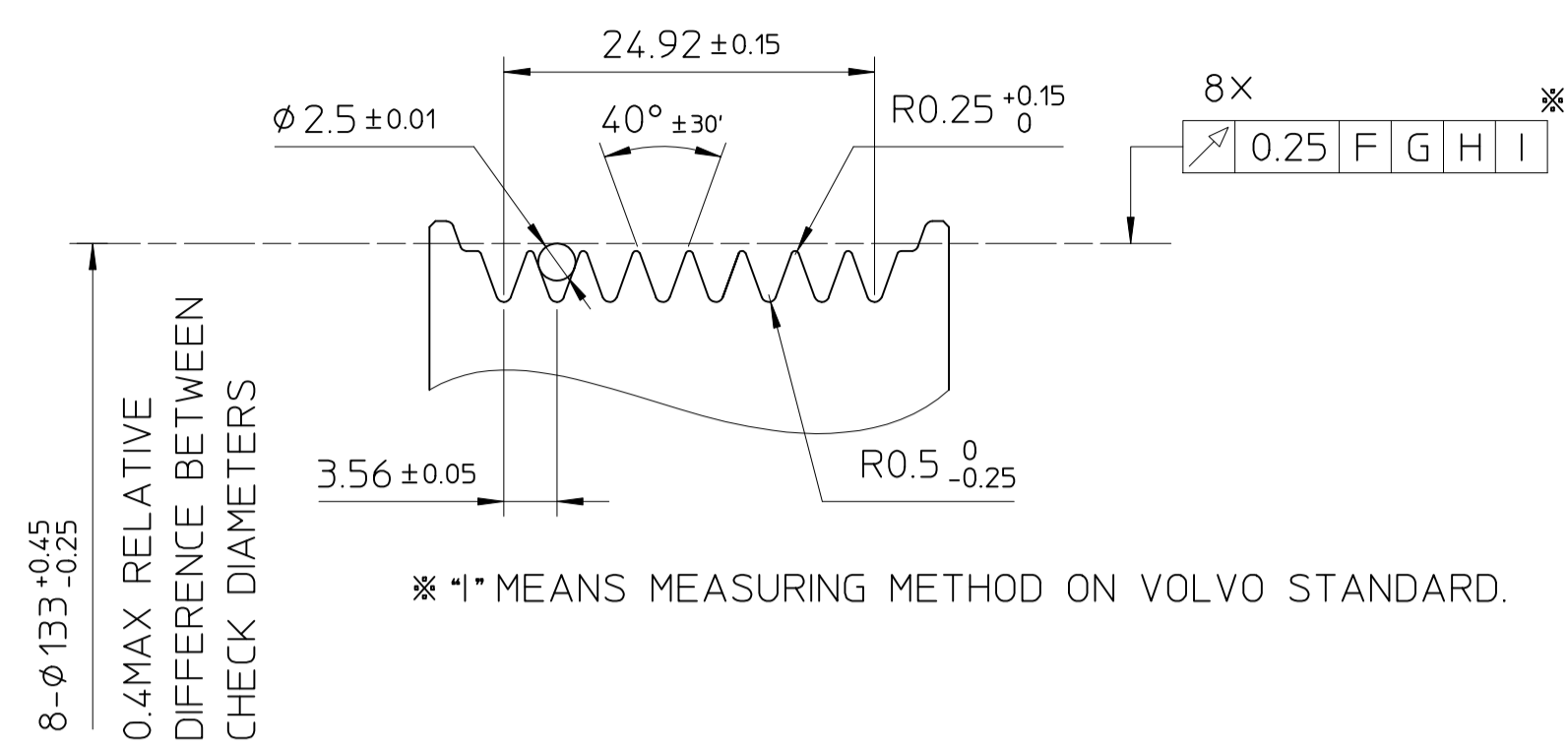


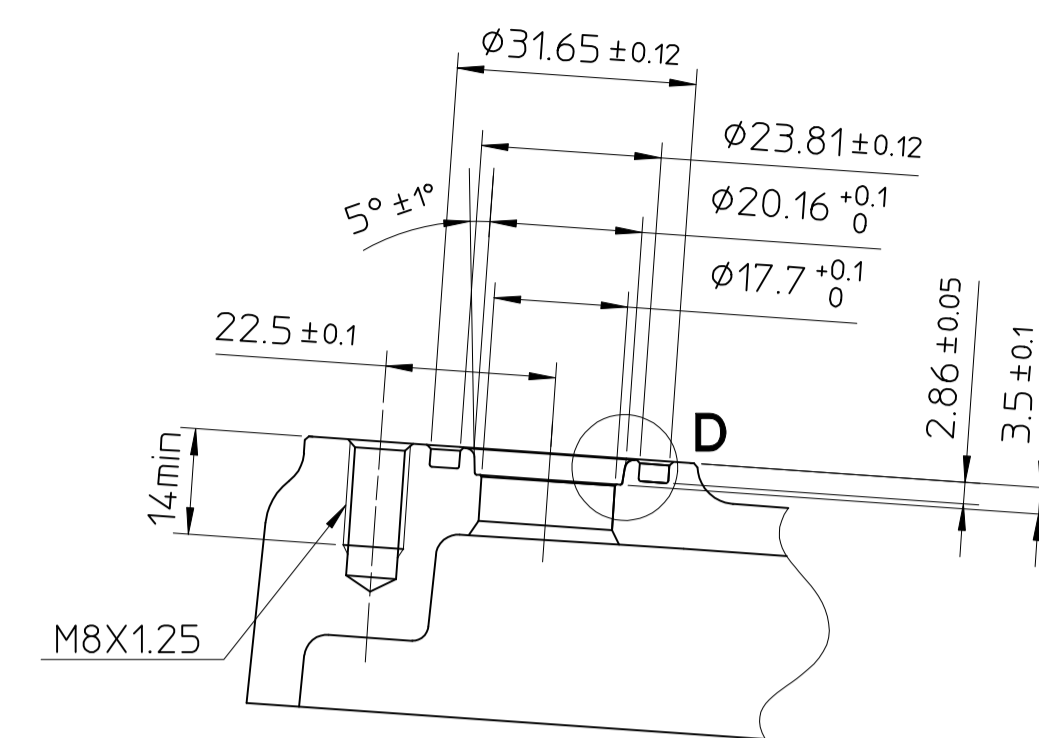
CIRCUIT DIAGRAM



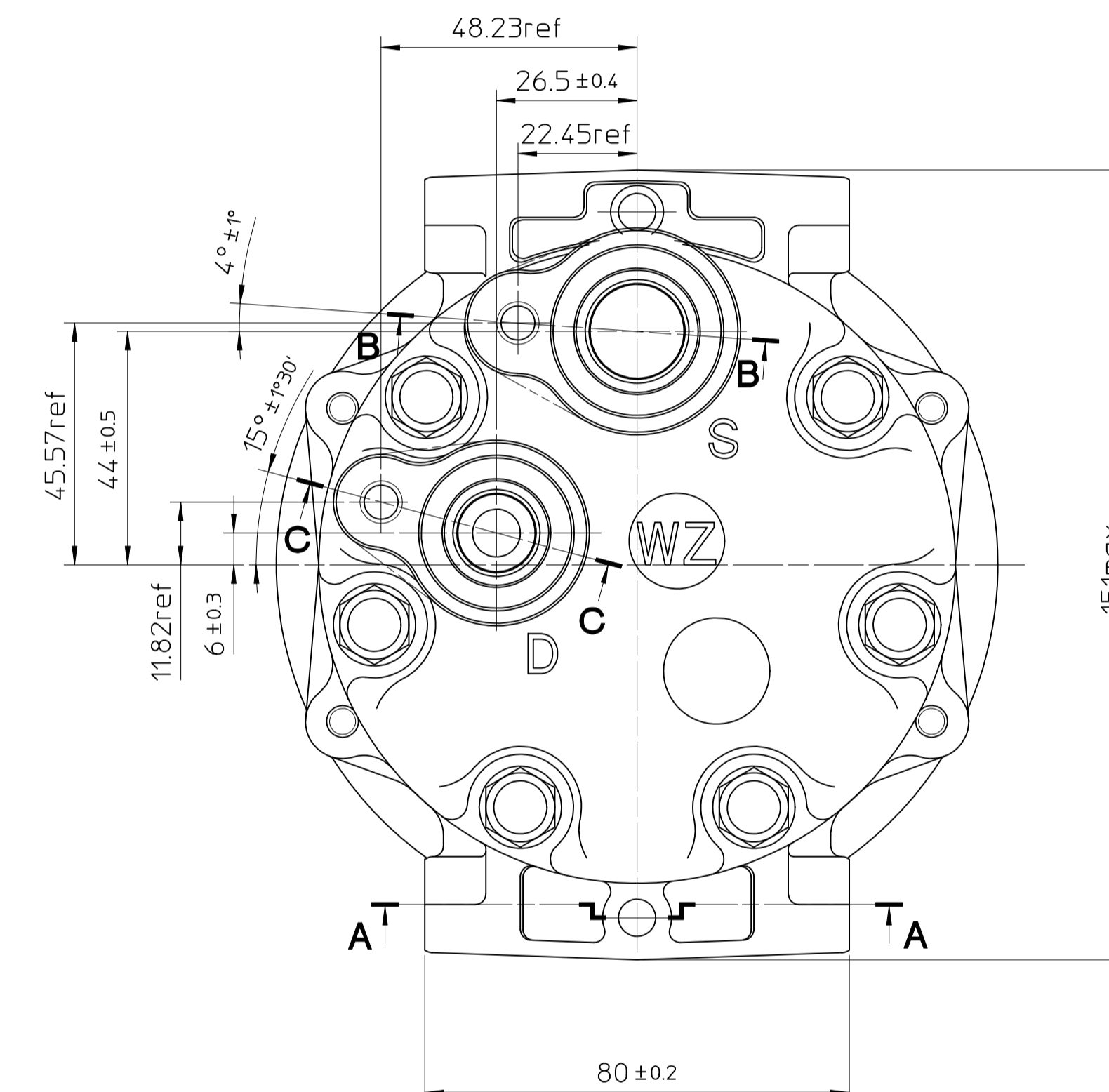
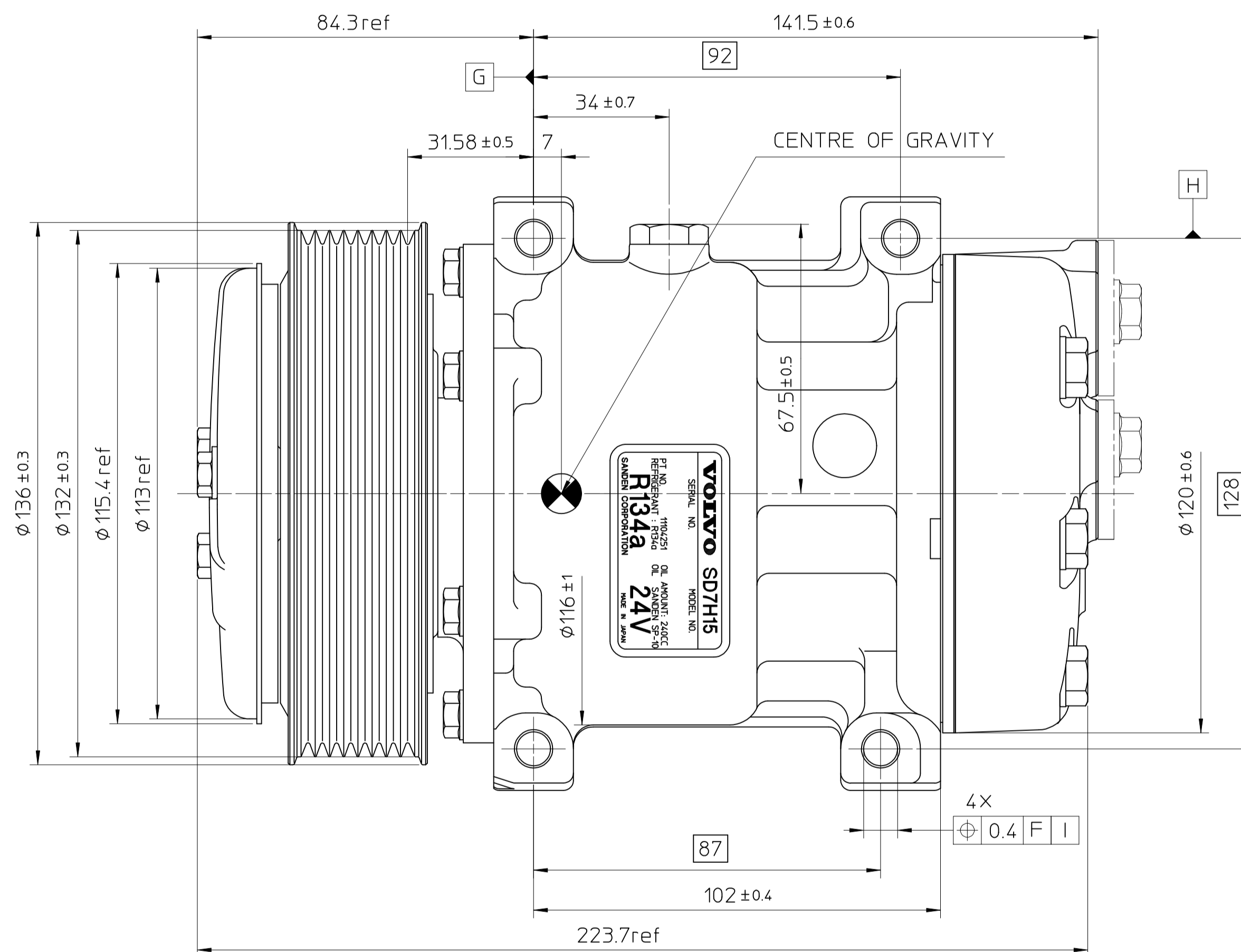
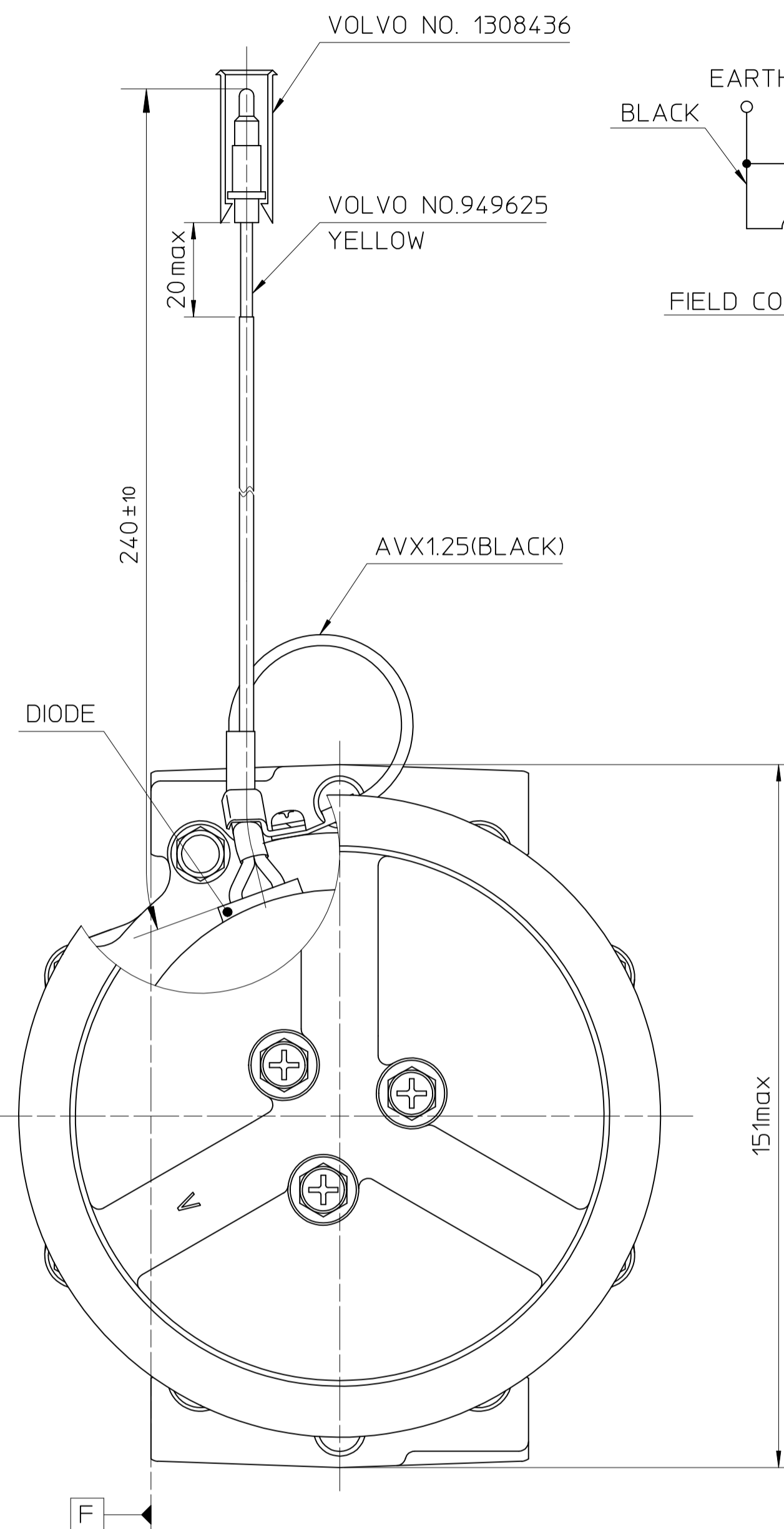
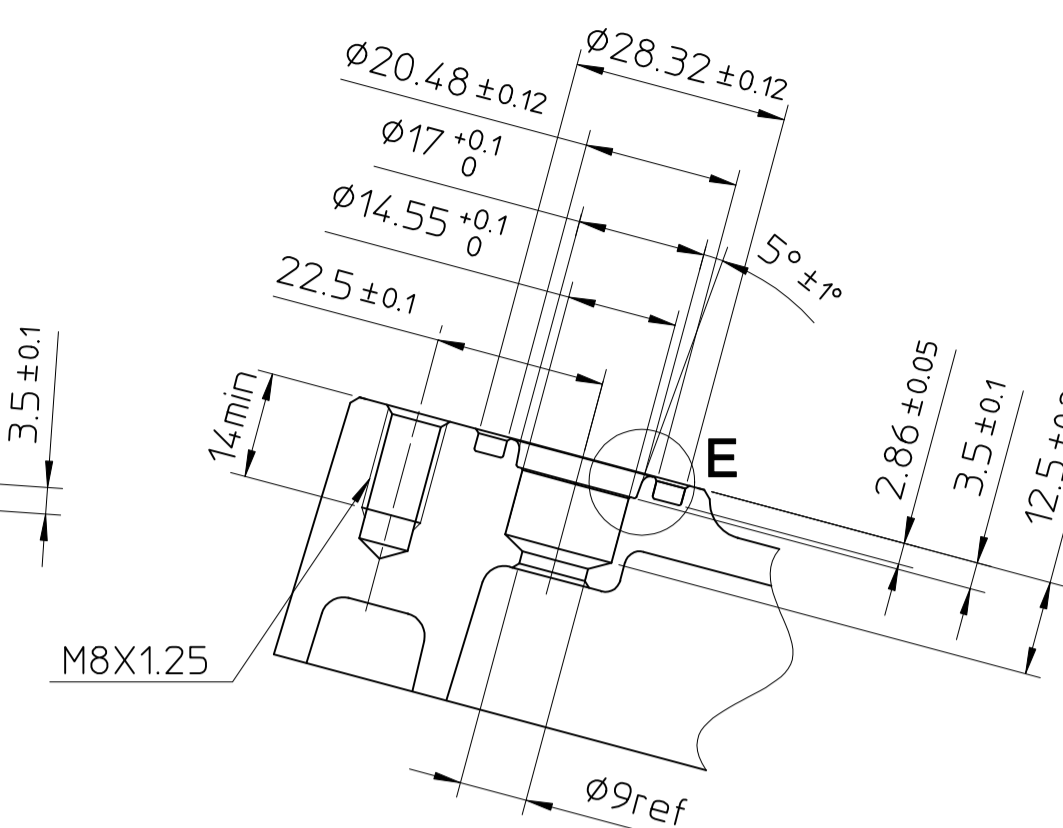
DETAIL OF ROTOR GROOVE (2:1)



PARTIAL SECT.B-B



PARTIAL SECT.C-C



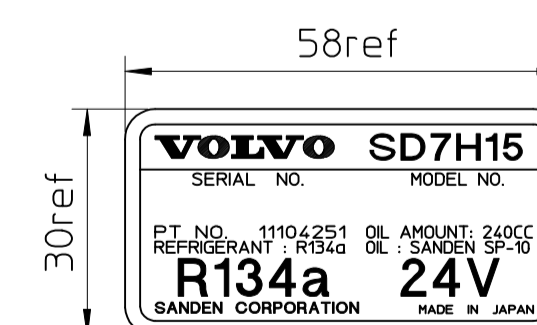
COMPRESSOR SPECIFICATIONS

BORE	29.3 mm
STROKE	32.8 mm
NUMBER OF CYLINDERS	7
DISPLACEMENT PER REVOLUTION	154.9 cm ³ /rev.
MAXIMUM ALLOWABLE CONTINUOUS SPEED	5000 r.p.m.
MAXIMUM DOWNSHIFT SPEED	5000 r.p.m.
REFRIGERANT	R134a
OIL	SP-10 OR EQUIVALENT
OIL CHARGE	240 cm ³
ROTATION (CLUTCH SIDE VIEW)	CLOCKWISE
WEIGHT	kg

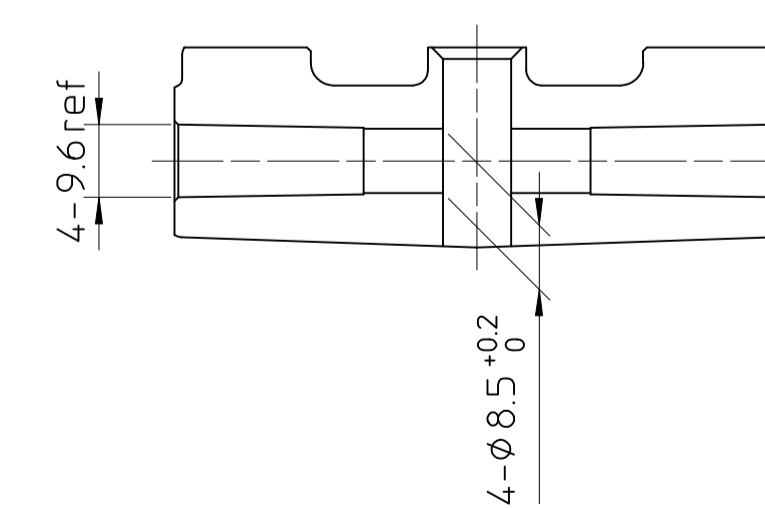
CLUTCH SPECIFICATIONS

RATED VOLTAGE	DC 24 V
MINIMUM BREAKAWAY TORQUE	34 N·m
MINIMUM ENGAGEMENT VOLTAGE	DC 16 V
MAXIMUM POWER CONSUMPTION	42 W
MAXIMUM ALLOWABLE CONTINUOUS SPEED	5000 r.p.m.
MAXIMUM DOWNSHIFT SPEED	5000 r.p.m.
BELT TYPE	PV TYPE
PULLEY DIAMETER	132 mm
WEIGHT	kg

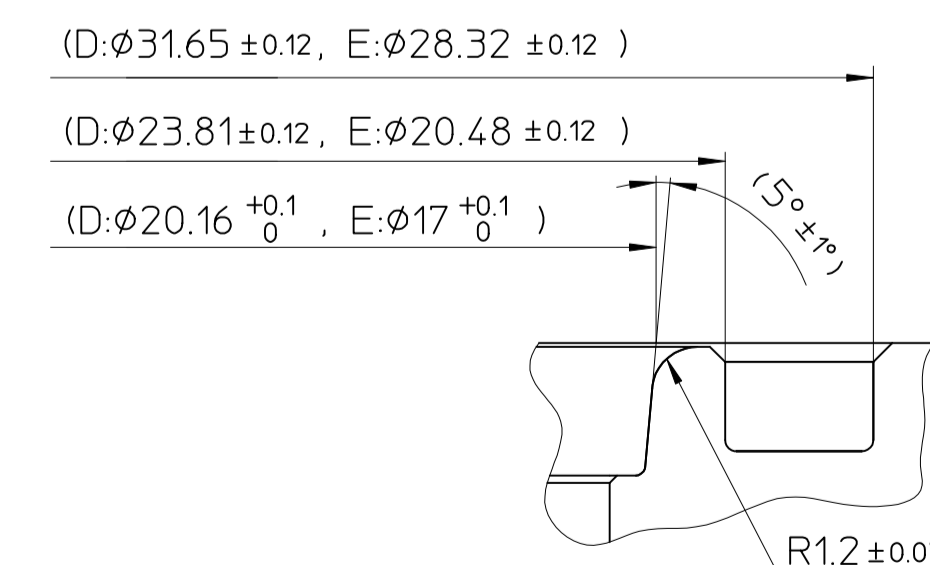
LABEL



PARTIAL SECT. A-A



DETAIL OF D,E (5:1)



PORT O-RING P/N

SUC.	8003-0500
DIS.	7846-0500

MOMENT OF INERTIA

CLUTCH DISENGAGED	541 N·cm ²
CLUTCH ENGAGED	640 N·cm ²
WEIGHT	7.99kg

BOLT SURFACE TREATMENT SPECIFICATION

Fe/Zn 5μ BLACK CROMATE

NOTE
THIS COMPRESSOR IS SD7H15 TYPE C.

REVISION RECORD	BY	DATE	MATERIAL	PART NO.	NAME
			THIRD ANGLE PROJECTION	SCALE 1:1	COMPRESSOR
			DESIGNED BY H.Akuzawa	DATE 10_FEB_2000	MODEL SD7H15WZ8112
			CHECKED BY Y.Uchiyama	DATE 10_FEB_2000	DRAWING NO. 8112 - 6000
			APPROVED BY H.Chiyoda	DATE 10_FEB_2000	