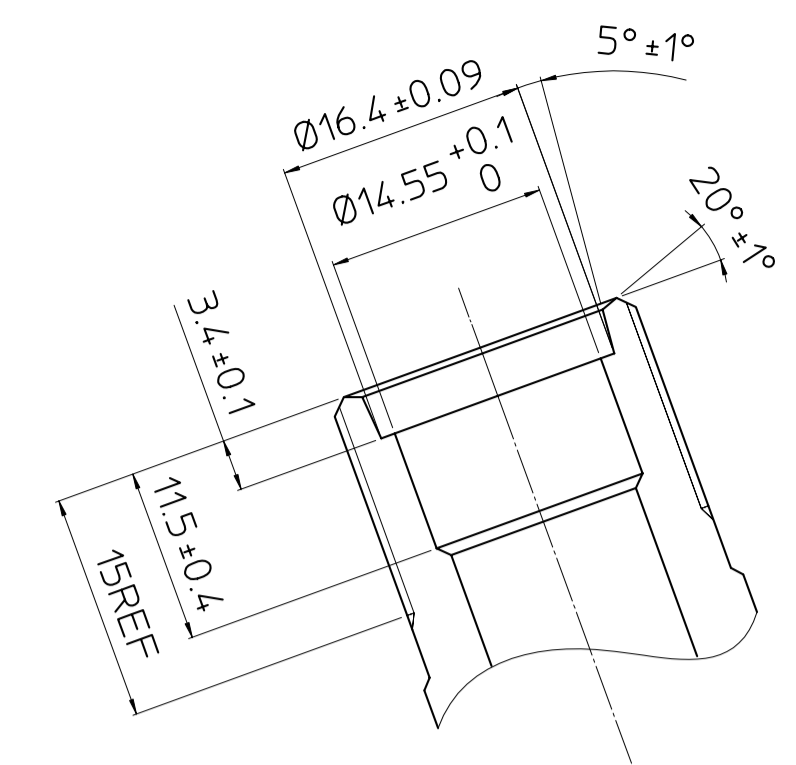
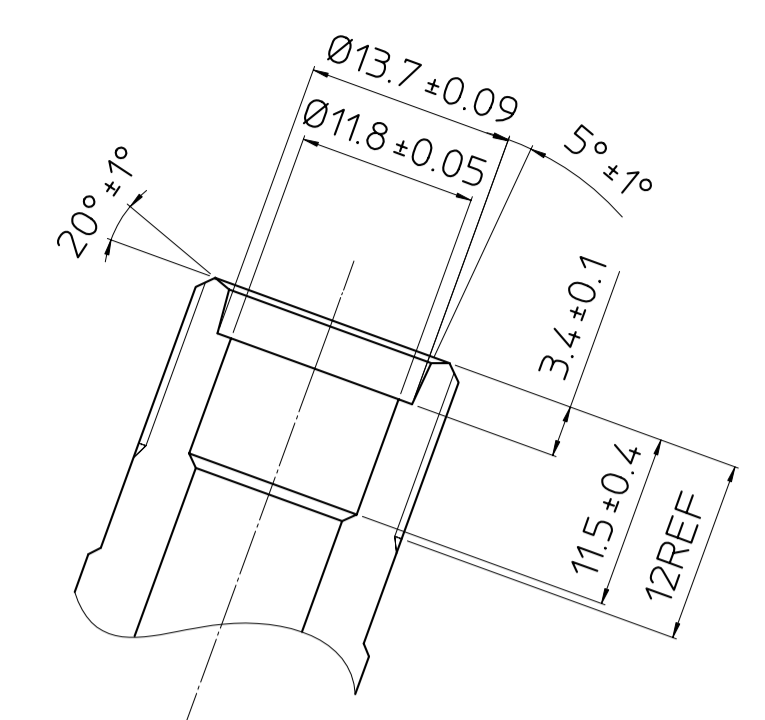


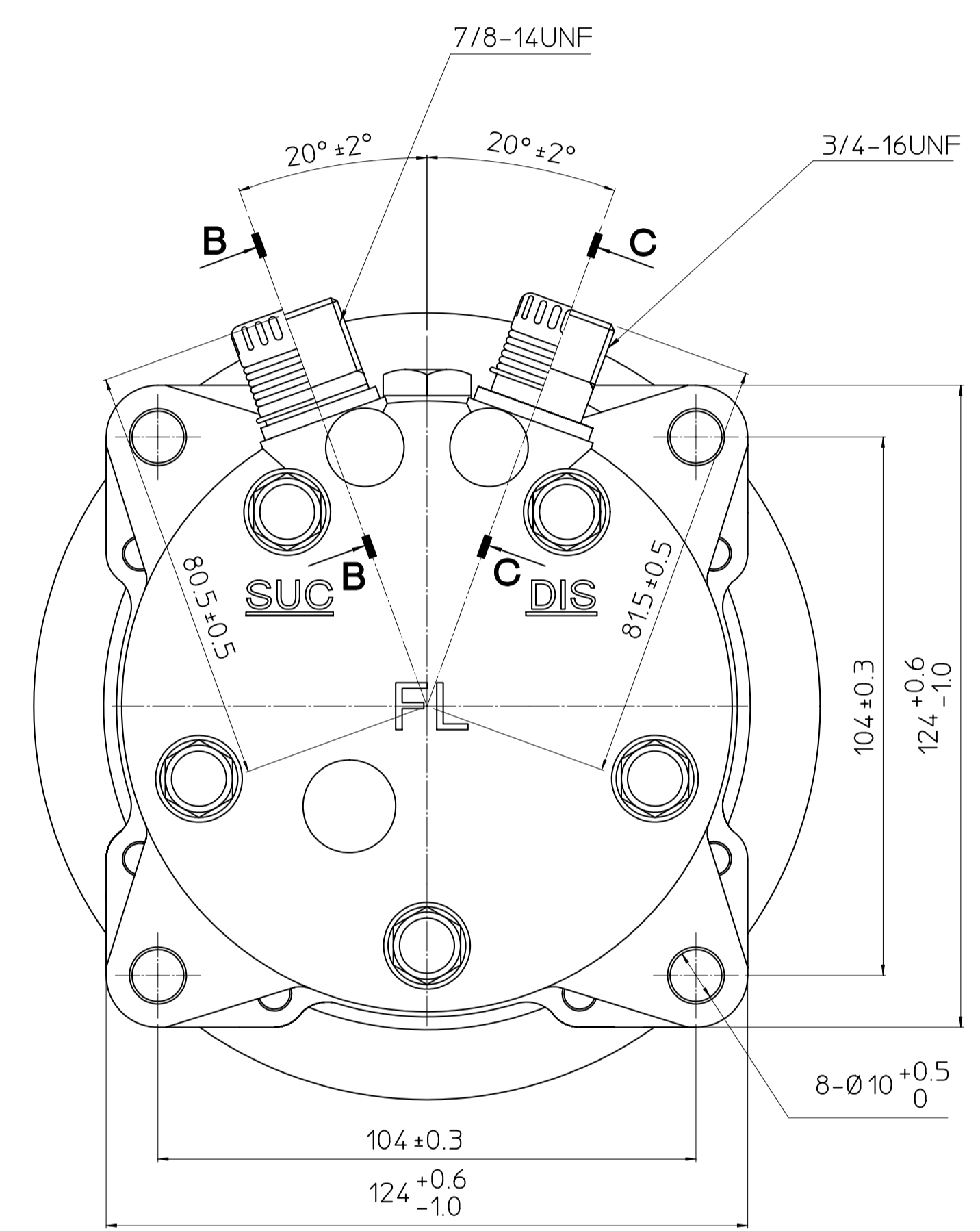
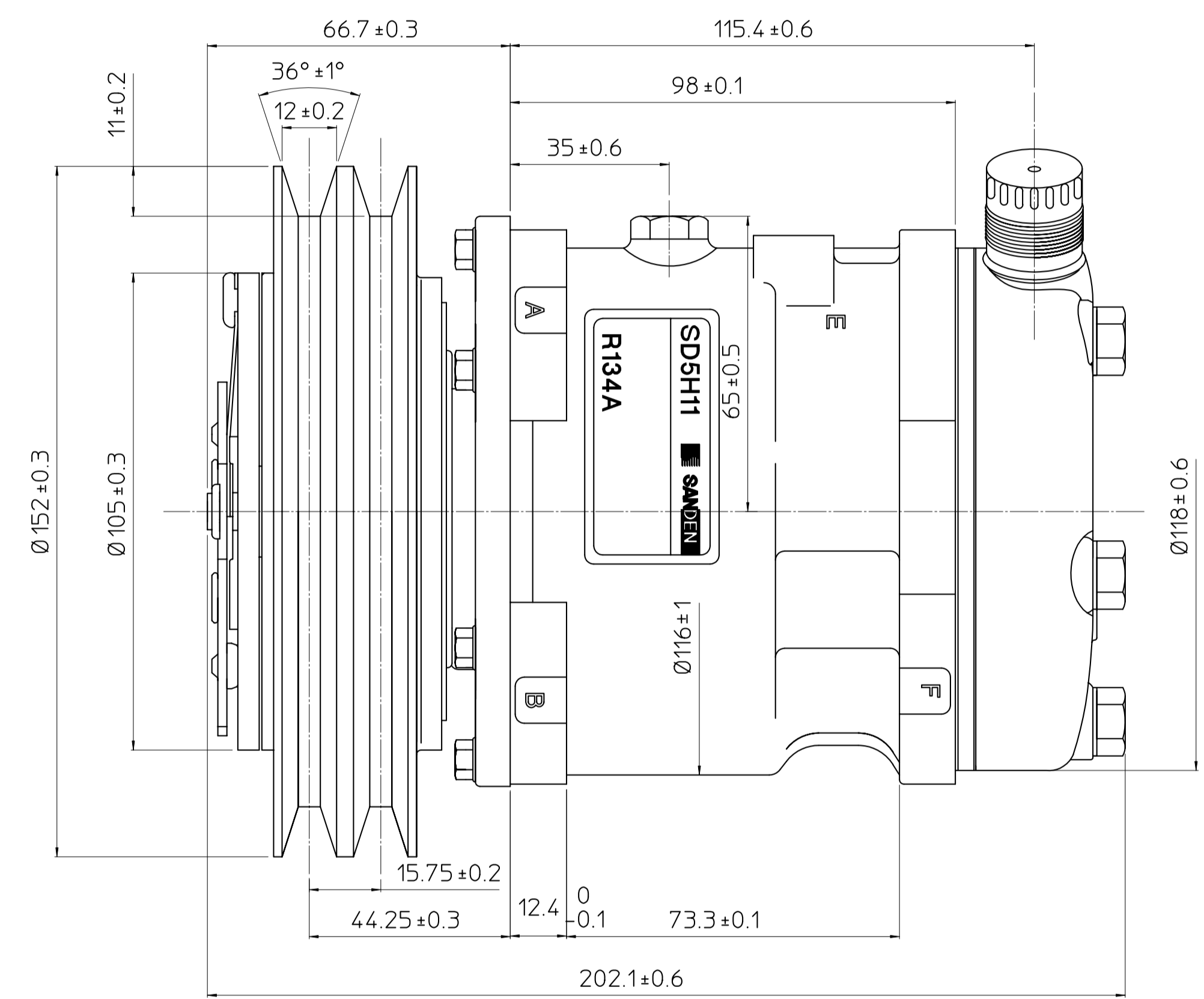
PARTIAL SECT A-A



PARTIAL SECT B-B (2:1)



PARTIAL SECT C-C (2:1)



**COMPRESSOR SPECIFICATIONS**

BORE	Ø35 mm
STROKE	22.6 mm
DISPLACEMENT PER REVOLUTION	108 cc/rev
NUMBER OF CYLINDERS	5
MAXIMUM ALLOWABLE r.p.m.	7000 r.p.m.
MAXIMUM ALLOWABLE CONTINUOUS r.p.m.	6000 r.p.m.
REFRIGERANT	HFC134a
OIL (SP-20 OR EQUIV.)	200 cc
ROTATION (CLUTCH SIDE VIEW)	CLOCKWISE
WEIGHT	kg

**CLUTCH SPECIFICATIONS**

RATED VOLTAGE	DC 12 V
BREAKAWAY TORQUE	2.65 kg-m
MINIMUM ENGAGEMENT VOLTAGE	7.5 V max
POWER CONSUMPTION	48 W (AL)
MAXIMUM ALLOWABLE r.p.m.	7000 r.p.m.
MAXIMUM ALLOWABLE CONTINUOUS r.p.m.	6000 r.p.m.
BELT TYPE	A2
PULLEY DIAMETER	Ø152 mm
WEIGHT	kg

REVISION RECORD No. BY DATE	MATERIAL	PART NO.	NAME
		6373	COMPRESSOR
	THIRD ANGLE PROJECTION	SCALE	MODEL
		1:1	SD5H11FL6373
	DESIGN BY	CHECKED BY	APPROVED BY
			DRAWING NO.
			6373-6000S

