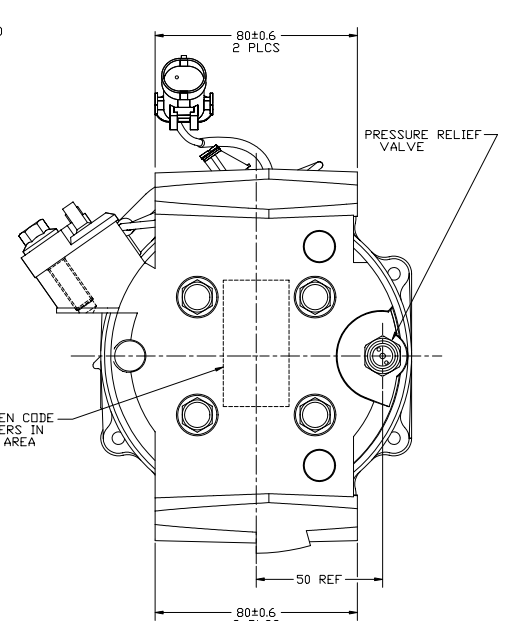
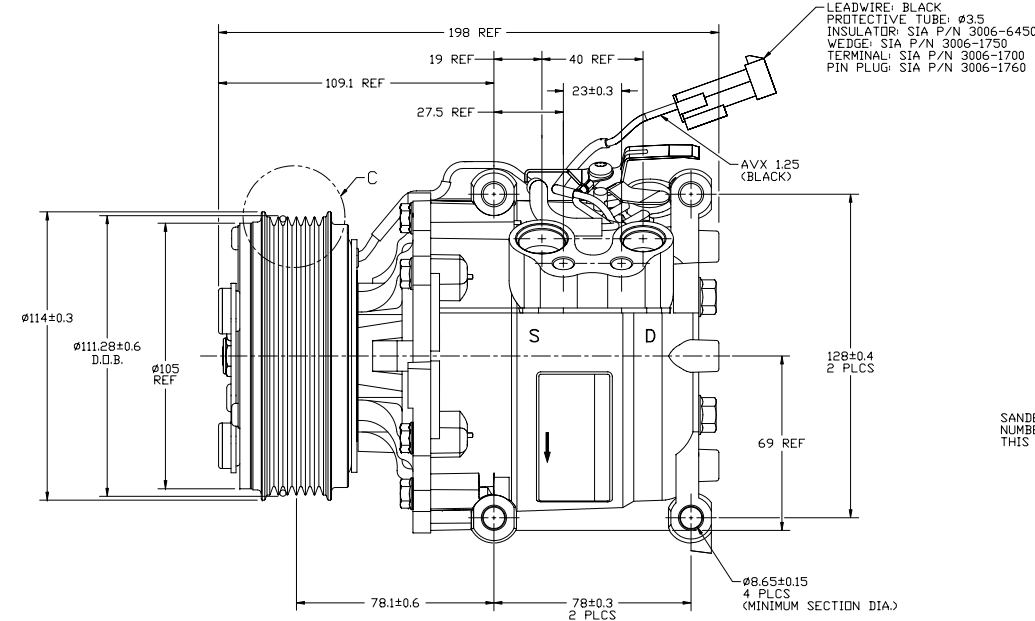
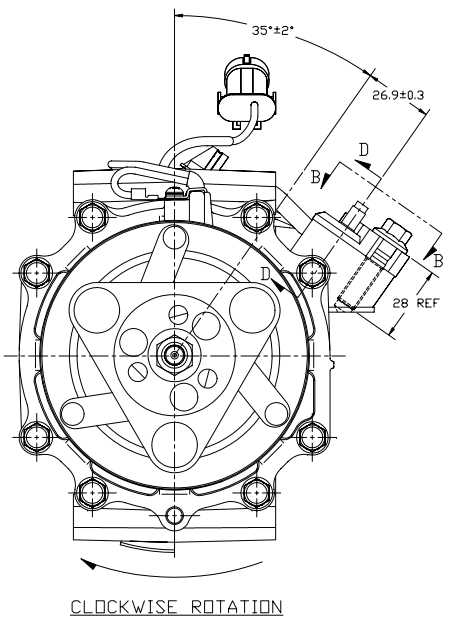
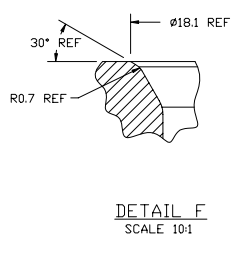
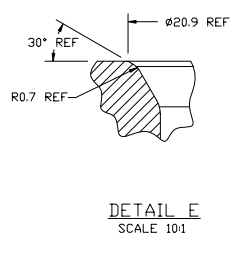
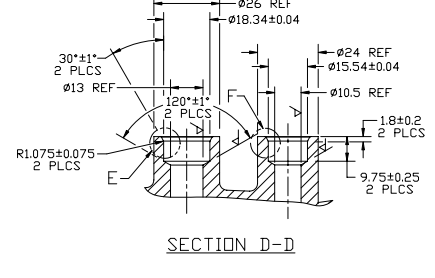
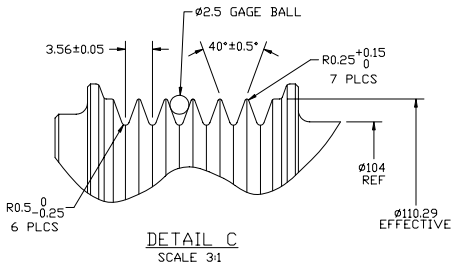
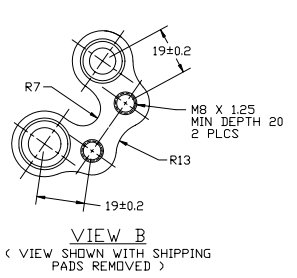


PCRN	REV.	APPV. DATE	REVISIONS	DVN	ESGN	CHK	APPV.
			INITIAL RELEASE				



COMPRESSOR SPECIFICATIONS

DISPLACEMENT PER REVOLUTION	85.7cc/rev (5.2 in ³ /rev)
MAXIMUM ALLOWABLE INSTANTANEOUS R.P.M.	12000 R.P.M.
REFRIGERANT	R134a
OIL (SP-15)	150cc (5.0 fl. oz.)
WEIGHT	36.3N (8.15lbf, 3.70kgf)

CLUTCH SPECIFICATIONS

RATED VOLTAGE	12V DC
CURRENT DRAW	4.37 AMPS MAX @ 14V
BREAKAWAY TORQUE	Min 31.4 N·m (23.1 ft·lbf, 3.2 kgf·m) AT 12V
MINIMUM ENGAGEMENT VOLTAGE	7.5V @ AIR GAP 0.5mm REF
POWER CONSUMPTION	50 WATTS MAX
BELT TYPE	PV6 GROOVE TYPE
MAXIMUM ALLOWABLE BELT TENSION	883 N (198 lbf, 90 kgf)
PULLEY DIAMETER	DIAMETER OVER BALL Ø111.28mm (Ø4.38in)
WEIGHT	20.6N (4.63lbf, 2.10kgf)
CLUTCH TYPE	STANDARD AUTOMOTIVE CLUTCH

RECOMMENDED CLUTCH CYCLING RATE

RPM	ALLOWABLE CYCLING RATE
TD 9000	4/MIN. MAX
9000-11000	2/MIN. MAX
OVER 11000	DO NOT RE-ENGAGE CLUTCH IF DISENGAGED.

THERMAL PROTECTOR SWITCH SPECIFICATIONS

TYPE	BIMETAL
CUT OFF TEMPERATURE	125±3°C (257±5°F)
CUT IN TEMPERATURE	110±6°C (230±10°F)

PRESSURE RELIEF VALVE SPECIFICATIONS

OPENING PRESSURE	550±50 PSI
------------------	------------

DO NOT SCALE

RELEASED FOR DESIGN DEVELOPMENT	<p>SANDEN SANDEN INTERNATIONAL (U.S.A.), INC.</p>
CHK: KS IF	
APPV: IB	<p>This drawing and the information contained herein are CONFIDENTIAL and PROPRIETARY to Sanden International (U.S.A.), Inc. and are to be disclosed to others without the written permission of Sanden International (U.S.A.), Inc.</p> <p>INTERPRETATION OF THIS DRAWING PER ASME Y14.5M-1994</p>
RELEASED FOR DESIGN VALIDATION	<p>THIRD ANGLE PROJECTION</p> <p>SIZE: D</p>
APPV: IB	MODEL:
RELEASED FOR PRODUCTION VAL. S.	NAME:
APPV: IB	<p>COMPRESSOR</p>
RELEASED FOR PRODUCTION	DWG. NO.:
APPV: Sny DWH	<p>4969-AFT-6000</p>
RELEASED FOR PRODUCTION	REV:
APPV: DATE	<p>A</p>