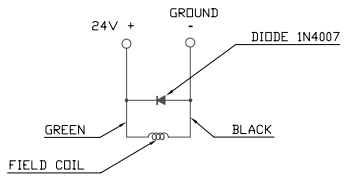
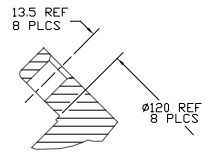


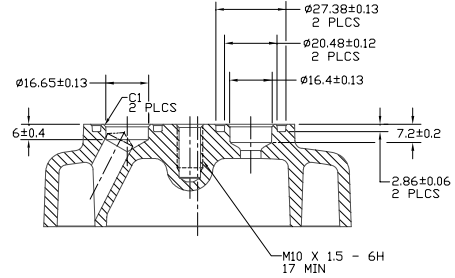
16 | 15 | 14 | 13 | 12 | 11 | 10 | 9 | 8 | 7 | 6 | 5 | 4 | 3 | 2 | 1



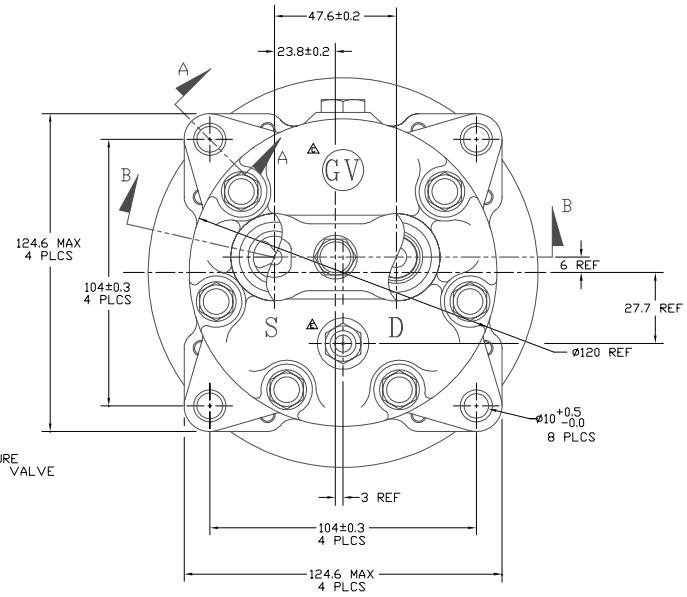
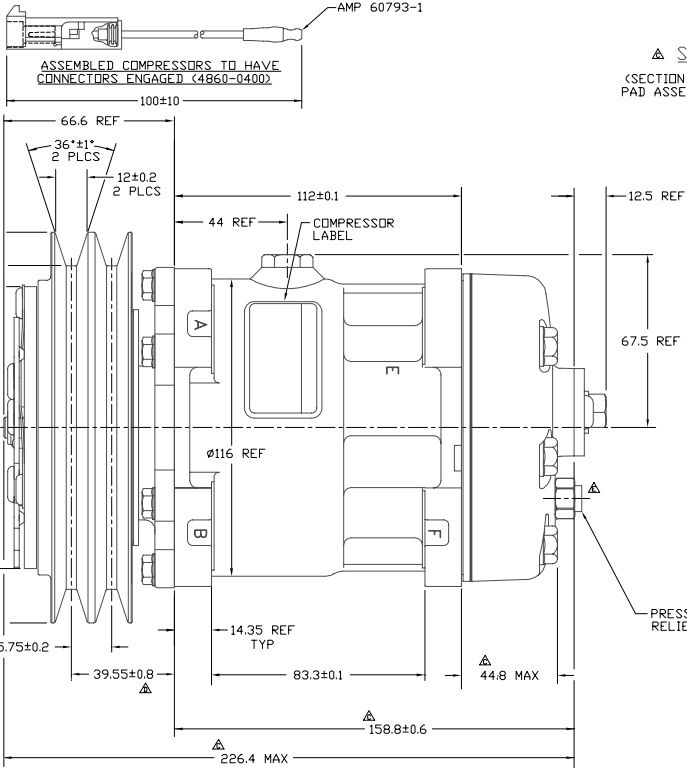
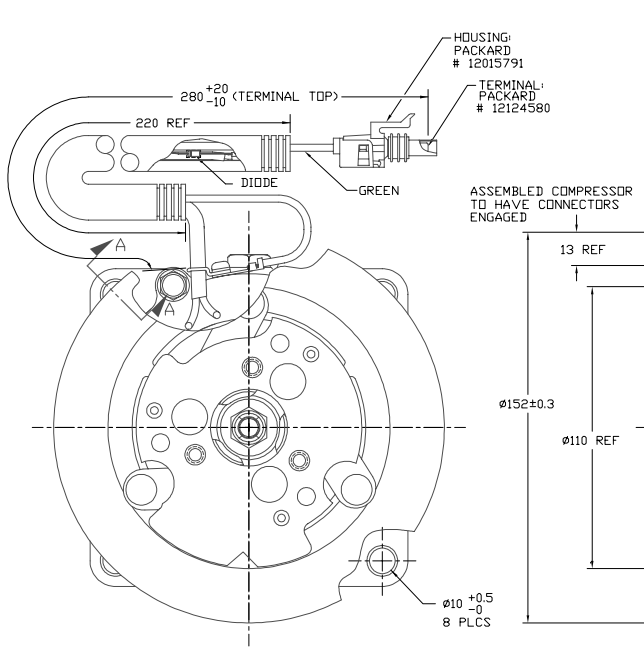
CIRCUIT DIAGRAM



SECTION A-A



SECTION B-B
(SECTION WITH O-RINGS, SHIPPING PAD ASSEMBLY, AND BOLT REMOVED)



COMPRESSOR SPECIFICATIONS (REF)

DISPLACEMENT PER REVOLUTION	1549 cc / rev. (95cuin. / rev.)
MAXIMUM ALLOWABLE SPEED	7000 R.P.M.
MAXIMUM ALLOWABLE CONTINUOUS SPEED	6000 R.P.M.
REFRIGERANT	R134a
OIL (SP-15)	200 cc (6.76 floz.)
WEIGHT	TBD

CLUTCH SPECIFICATIONS (REF)

RATED VOLTAGE	DC 24V
BREAKAWAY TORQUE	3.5 kgf-m min. @ 24V
MINIMUM ENGAGEMENT VOLTAGE	16V @ AIR GAP 0.6mm
POWER CONSUMPTION	34 watts max.
BELT TYPE	A TYPE
MAXIMUM ALLOWABLE BELT TENSION	60 kgf per belt
PULLEY DIAMETER	152 mm (5.98 in.)
CLUTCH TYPE	HEAVY DUTY

NOTE:
1. N₂ HOLDING CHARGE DELETED.

PCDN	REV.	APPLY DATE	REVISIONS	DVN	DSGN	CHK	APPV
			INITIAL RELEASE				
2001340	11/7/70		OIL SP-15 WAS SP-20	JS	LK	DRL	MY
200074	3/27/02		448 MAX WAS 23.4, 236.4 MAX WAS 200 MAX. TOLERANCE WAS 17.4MM. REMOVE ON CYL HEAD AND DISC. REVISED SECT A-A	DKC	MH	DRL	JC
2002175	6/24/02		39.55188 WAS 39.55403	DRL	MH	DRL	RG
2006310	12/11/06		PRV 4307-6470 WAS 4967-6470	JS	JW	DRL	TK

RELEASED FOR PRODUCTION DWN: Harrington CHK: Dennis Lee 4/10/11 APPLY: 3 Seals DATE: 4/20/11 DESIGN VALIDATION DWN: Harrington APPLY: 3 Seals DATE: 4/20/11 RELEASED FOR PRODUCTION DWN: Harrington APPLY: 3 Seals DATE: 4/20/11 RELEASED FOR PRODUCTION DWN: John Calhoun DATE: 11/17/12	<p>SANDEN INTERNATIONAL (U.S.A.), INC.</p> <p>SCALE REF: 1:1 PLATTED IDEAL REF: 1:1 METRIC</p> <p>This drawing and the information contained herein are CONFIDENTIAL and PROPRIETARY to Sanden International (U.S.A.), Inc. and are loaned to CONFIDEE and shall not be used, copied, or disclosed to others without the written permission of Sanden International (U.S.A.), Inc.</p> <p>INTERPRETATION OF THIS DRAWING PER ASME Y14.5M-1994</p> <p>THIRD ANGLE PROJECTION</p> <p>MATERIAL: </p> <p>NAME: COMPRESSOR</p> <p>DWG NO: 4881-6000</p> <p>REV: E</p>
--	--

DO NOT SCALE

16 | 15 | 14 | 13 | 12 | 11 | 10 | 9 | 8 | 7 | 6 | 5 | 4 | 3 | 2 | 1