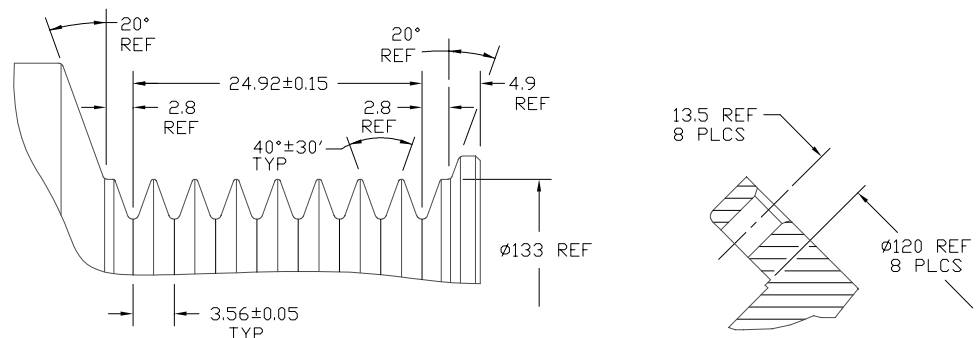
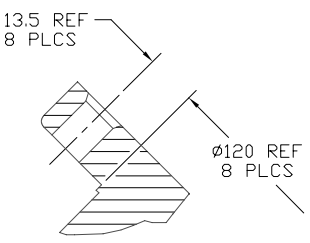


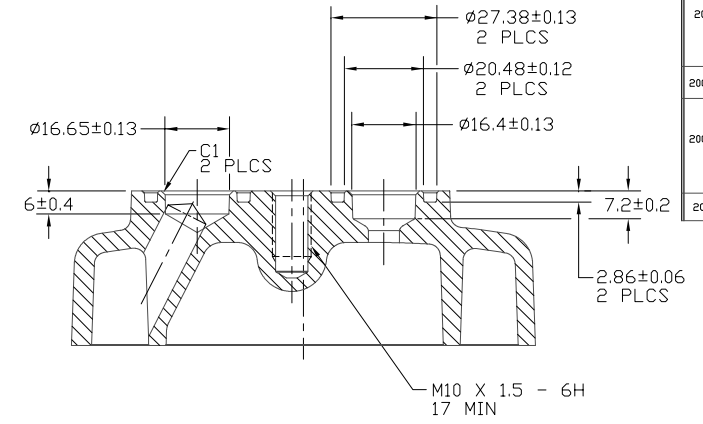
CIRCUIT DIAGRAM



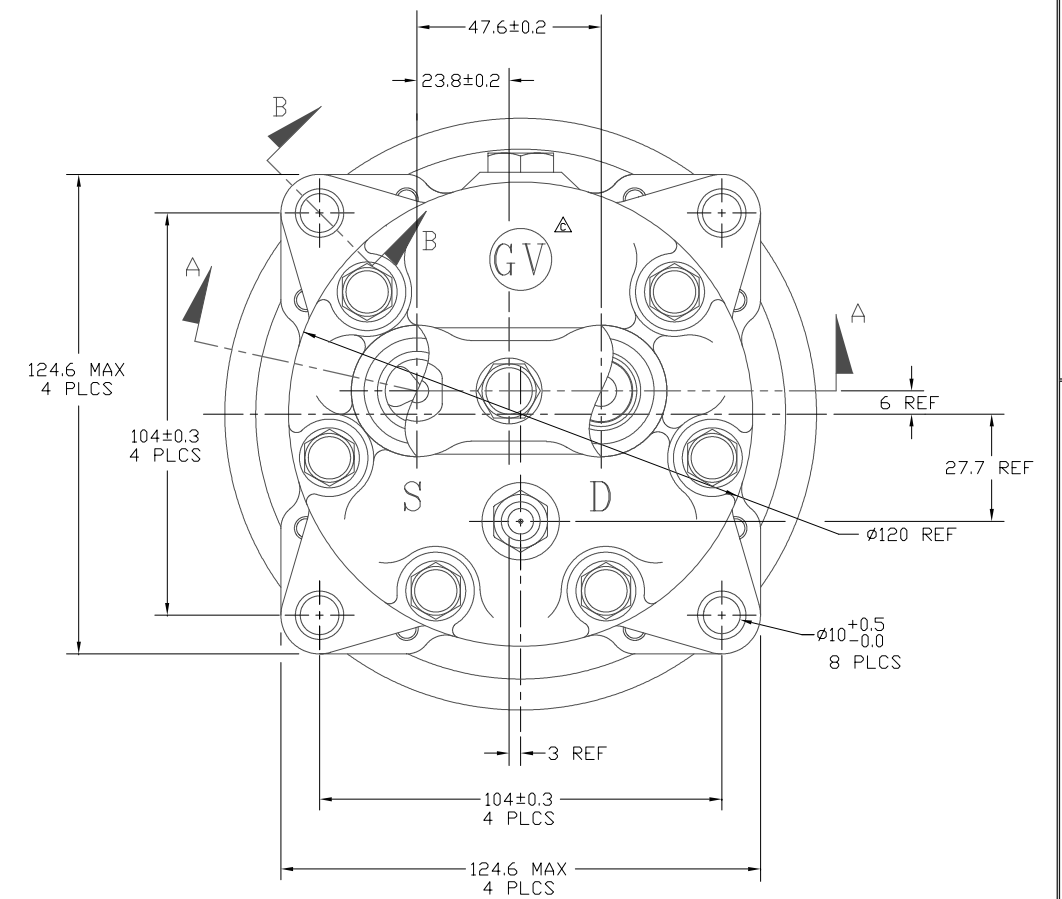
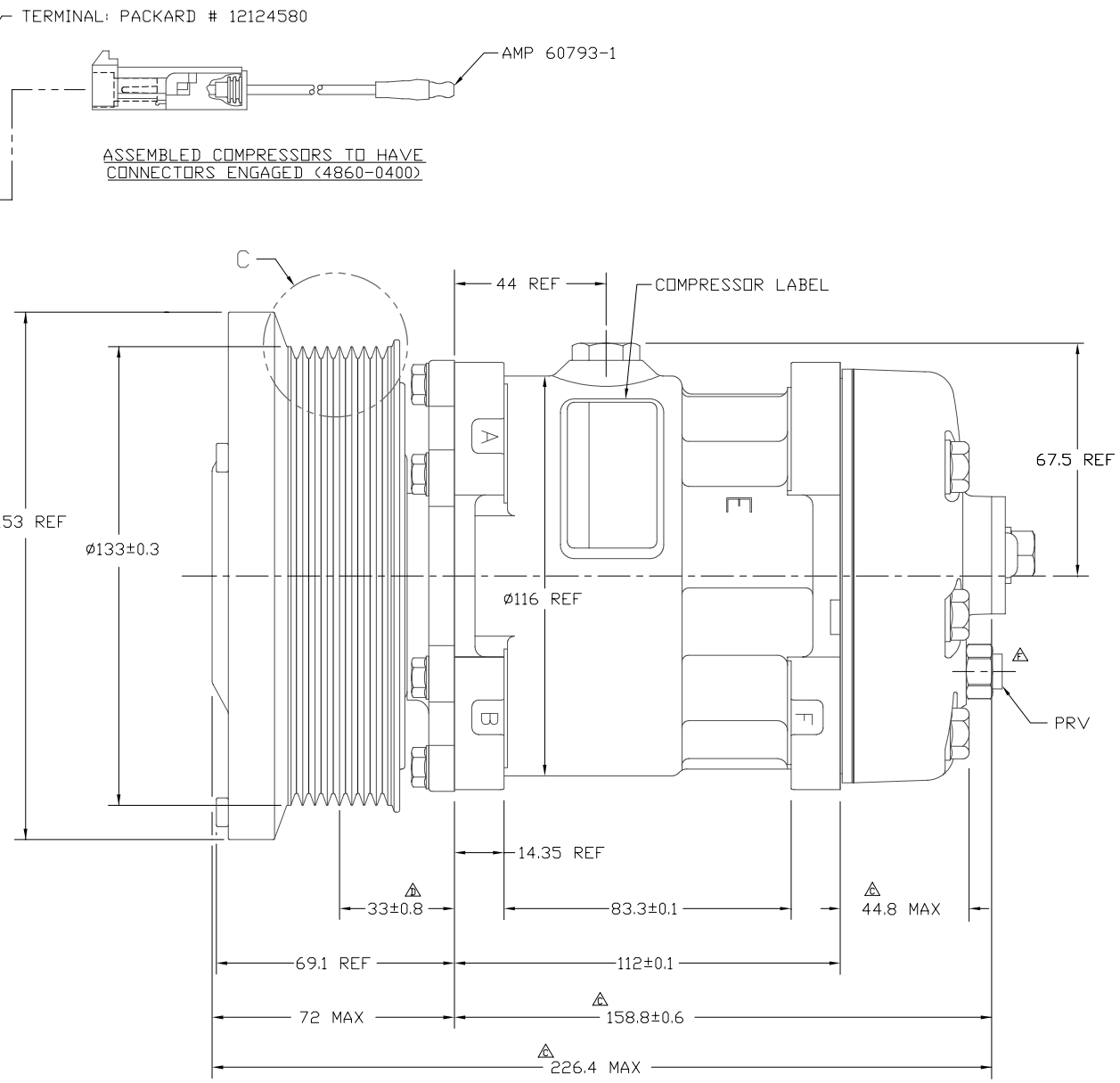
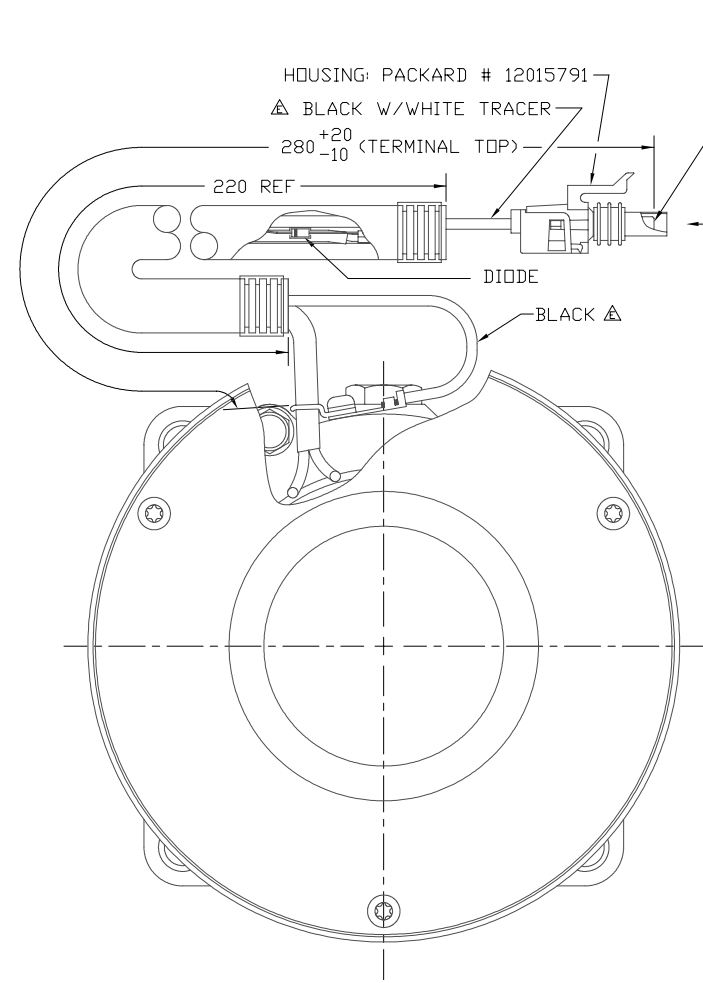
DETAIL C
SCALE: 3:1



SECTION B-B



SECTION A-A
(SECTION WITH O-RINGS, SHIPPING PAD ASSEMBLY, AND BOLT REMOVED)



COMPRESSOR SPECIFICATIONS (REF)

DISPLACEMENT PER REVOLUTION	154.9 cc / rev. (9.5 cu. in. / rev.)
MAXIMUM ALLOWABLE R.P.M.	4000 R.P.M.
MAXIMUM ALLOWABLE CONTINUOUS R.P.M.	4000 R.P.M.
REFRIGERANT	R134a
OIL (SP-15)	200 cc (6.76 fl.oz.)
WEIGHT	8.5 kg (18.8 lb)

CLUTCH SPECIFICATIONS (REF)

RATED VOLTAGE	DC 12V
BREAKAWAY TORQUE	3.5 kgf-m min. @ 12V
MINIMUM ENGAGEMENT VOLTAGE	7.5V @ AIR GAP 0.6mm
POWER CONSUMPTION	43 watts max.
BELT TYPE	PV8 TYPE
MAXIMUM ALLOWABLE BELT TENSION	120 kgf
PULLEY DIAMETER	Ø133 mm (5.2 in.)
CLUTCH TYPE	SEALED HEAVY DUTY

NOTE:
1. N₂ HOLDING CHARGE DELETED.

DO NOT SCALE

PCDN	REV.	APPV DATE	REVISIONS	DWN	DSGN	CHK	APPV
			INITIAL ISSUE				
2001340	Δ	11-7-01	DIL SP-15 WAS SP-20	JS	LK	DRL	MY
2002074	Δ	3/27/02	44.8 MAX WAS 33.4, 226.4 MAX WAS 220 MAX, 158.8±0.6 WAS 147.4±0.6, REMOVE GN CYL HEAD AND DIMS ADDED GV CYL HEAD AND DIMS REVISED SECT A-A	DKC	MH	DRL	JC
2002175	Δ	6/24/02	33±0.8 WAS 33±0.5	DRL	MH	DRL	RG
2003033	Δ	3/28/03	BLACK W/WHITE TRACER WAS BLACK BLACK WAS BLACK W/WHITE TRACER ADDED BLACK IN COMPRESSOR SPECIFICATIONS: 4000 RPM WAS 7000 RPM 4000 RPM WAS 6000 RPM 8.5 kg (18.8lb) WAS TBD	JS	DS HF	DRL	RG
2006310	Δ	12/11/06	PRV: 4307-6470 WAS 4967-6470	RSR	JW	DRL	TK

REV. LEVEL	RELEASED FOR: ENG'G DEVELOPMENT	<p>SANDEN INTERNATIONAL (U.S.A.), INC.</p>	<p>DRAWN SCALE REF 1:1 PLOTTED SCALE REF NONE METRIC</p> <p>This drawing and the information contained hereon are CONFIDENTIAL and PROPRIETARY to Sanden International (U.S.A.), Inc., are received in CONFIDENCE and shall not be used, copied, or disclosed to others without the written permission of Sanden International (U.S.A.), Inc.</p>
APPV.	D Seals		
REV. LEVEL	RELEASED FOR: DESIGN VALIDATION	INTERPRETATION OF THIS DRAWING PER ASME Y14.5M-1994	THIRD ANGLE PROJECTION
APPV.	D Seals		SIZE D
REV. LEVEL	RELEASED FOR: PRODUCTION VAL'D.	MATERIAL:	
APPV.	D Seals		
REV. LEVEL	RELEASED FOR: PRODUCTION	NAME	COMPRESSOR
APPV.	Robert Garver	DWG. NO.	4874-6000
APPV. DATE	6/24/02	REV	F