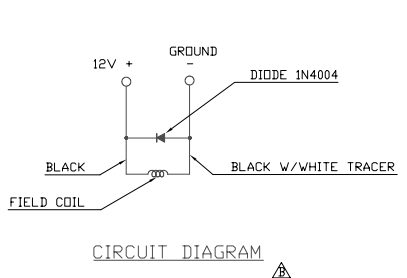
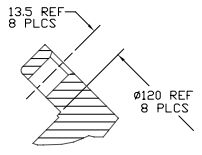


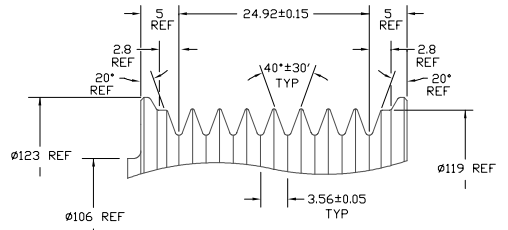
16 | 15 | 14 | 13 | 12 | 11 | 10 | 9 | 8 | 7 | 6 | 5 | 4 | 3 | 2 | 1



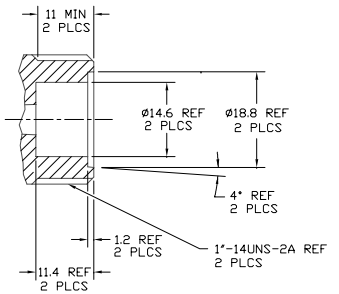
CIRCUIT DIAGRAM



SECTION A-A

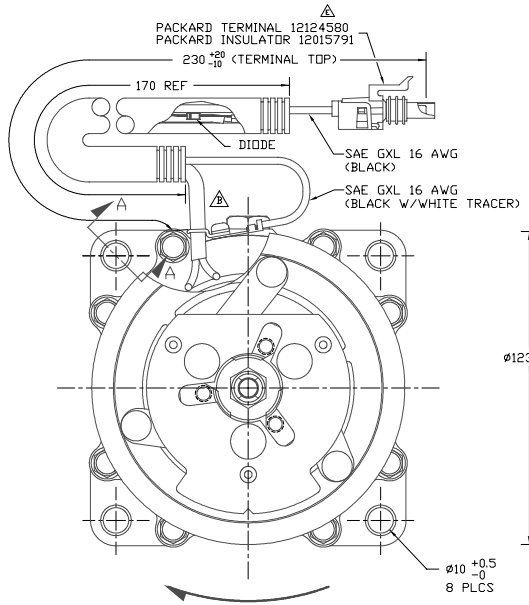


DETAIL B  
SCALE 3:1

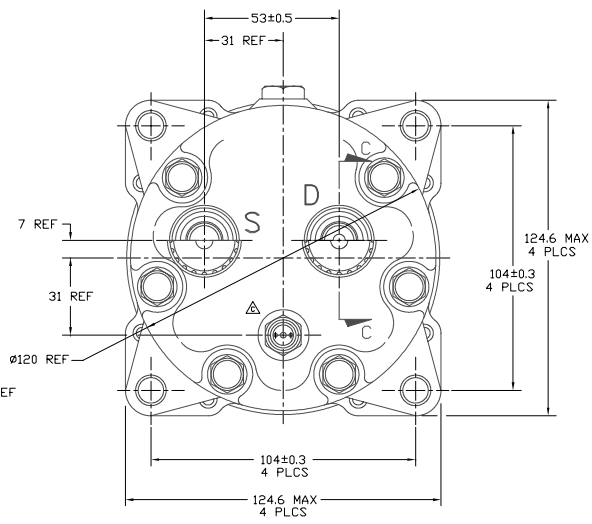
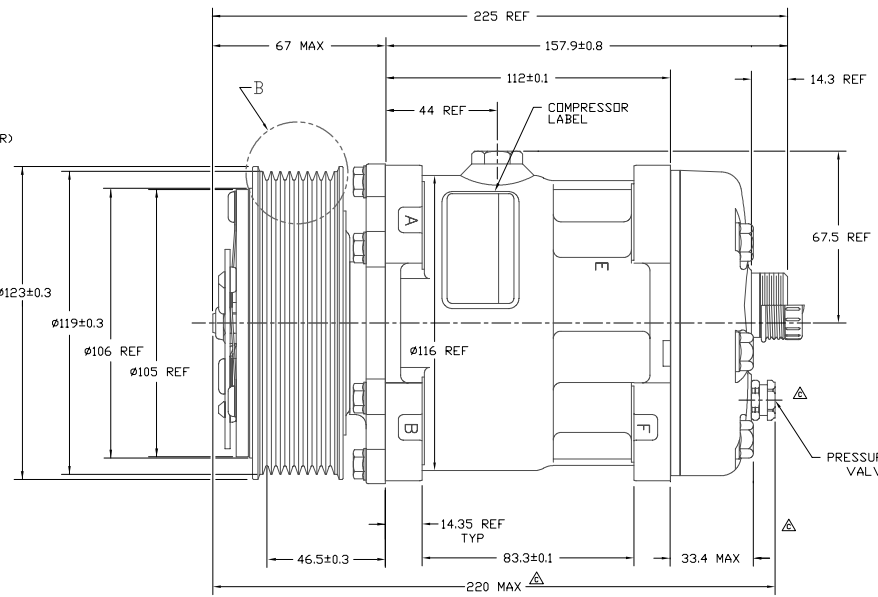


SECTION C-C  
SCALE 2:1  
TYPICAL BOTH PORTS  
(SECTION SHOWN WITH  
SEAL CAP REMOVED)

| PCSN    | REV | APPV DATE | REVISIONS  | DWN | ESGN | CHK | APPV  |
|---------|-----|-----------|--|-----|------|-----|-------|
|         |     |           | INITIAL RELEASE  |     |      |     |       |
| 99813   |     | 3/27/99   | CHANGED FROM KENDRICK TO SANDEN FIELD COIL ASSEMBLY. ADDED CIRCUIT DIAGRAM | RH  | LM   | DRL | DD HT |
| 2000024 |     | 06/13/00  | CHANGED REV FROM 405-4470 TO 406-4470                                      | TG  | LM   | DRL | DS    |
| 99087   |     |           | SELECTED DIM 06.03 MAX. 0.03 MAX WAS 0.04 MAX. UPDATED TITLE BLOCK.        |     |      |     |       |
| 2003340 |     | 11/06/01  | OIL (SP-15) WAS OIL (SP-20)  | RR  | LK   | DRL | MY    |
| 2002375 |     | 02/03/03  | 12124580 WAS 1200182   | RR  | HF   | DRL | BP    |
| 2006370 |     | 10/30/06  | ADDED NOTE 1.  | JS  | CW   | DRL | EMA   |



CLOCKWISE ROTATION



NOTE:  
1. COMPRESSOR TO BE CHARGED WITH NITROGEN PRIOR TO SHIPPING WITHIN 0.2 TO 1.6 kg/cm<sup>2</sup>.

COMPRESSOR SPECIFICATIONS (REF.)

|                                     |                                     |
|-------------------------------------|-------------------------------------|
| DISPLACEMENT PER REVOLUTION         | 154.9 cc / rev. ( 9.5cuin. / rev. ) |
| MAXIMUM ALLOWABLE R.P.M.            | 8000 R.P.M.                         |
| MAXIMUM ALLOWABLE CONTINUOUS R.P.M. | 6000 R.P.M.                         |
| REFRIGERANT                         | R134a                               |
| OIL ( SP-15 )                       | 240 cc ( 8.1 floz. )                |
| WEIGHT                              | 7.5 kg ( 16.6 lb. )                 |

CLUTCH SPECIFICATIONS (REF.)

|                                |                      |
|--------------------------------|----------------------|
| RATED VOLTAGE                  | DC 12V               |
| BREAKAWAY TORQUE               | 3.5 kgf-m min. @ 12V |
| MINIMUM ENGAGEMENT VOLTAGE     | 7.5V @ air gap 0.6mm |
| POWER CONSUMPTION              | 49 watts max.        |
| BELT TYPE                      | PVB                  |
| MAXIMUM ALLOWABLE BELT TENSION | 120 kgf              |
| PULLEY DIAMETER                | 119mm ( 4.7 in. )    |
| CLUTCH TYPE                    | HEAVY DUTY           |

|            |                                 |      |               |           |               |         |           |  |        |
|------------|---------------------------------|------|---------------|-----------|---------------|---------|-----------|--|--------|
| REV. LEVEL | RELEASED FOR DESIGN DEVELOPMENT | ISDN | Robert Hughes | SCALE REF | 1:1           | PLOTTED | SCALE REF | 1:1  | METRIC |
| DWN        | Robert Hughes                   | CHK  | John Nalley   | APPV      | Robert Hughes | DATE    | 7/8/94    | <p><b>SANDEN</b><br/>SANDEN INTERNATIONAL CORPORATION, INC.</p> <p>This drawing and the information contained herein are CONFIDENTIAL and PROPRIETARY to Sanden International (U.S.A.), Inc. and shall not be used, copied, or disclosed to others without the written permission of Sanden International (U.S.A.), Inc.</p> <p>INTERPRETATION OF THIS DRAWING PER ASME Y14.5M-1994</p> <p>THIRD ANGLE PROJECTION</p> <p>MATERIAL:</p> <p>NAME: COMPRESSOR</p> <p>DWG. NO: 4672-6000</p> <p>REV. F</p> |        |
| A-B        | DESIGN VALIDATION               | ISDN | Robert Hughes | APPV      | Robert Hughes | DATE    | 7/8/94    | <p>DO NOT SCALE</p>  |        |
| A-B        | RELEASED FOR PRODUCTION         | ISDN | Robert Hughes | APPV      | Robert Hughes | DATE    | 7/8/94    |  |        |

16 | 15 | 14 | 13 | 12 | 11 | 10 | 9 | 8 | 7 | 6 | 5 | 4 | 3 | 2 | 1