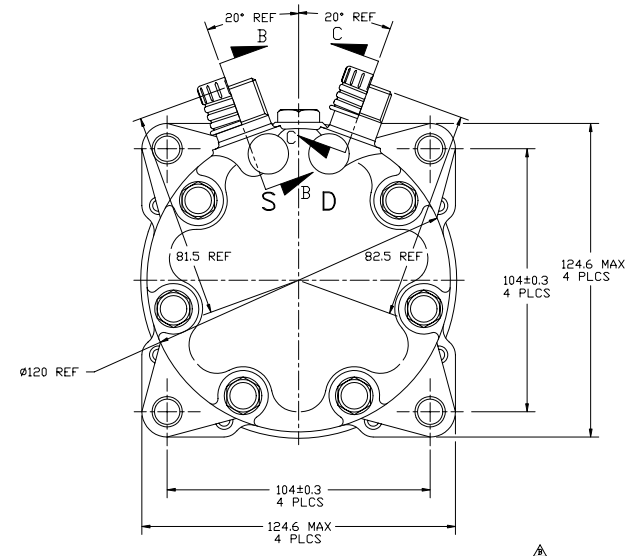
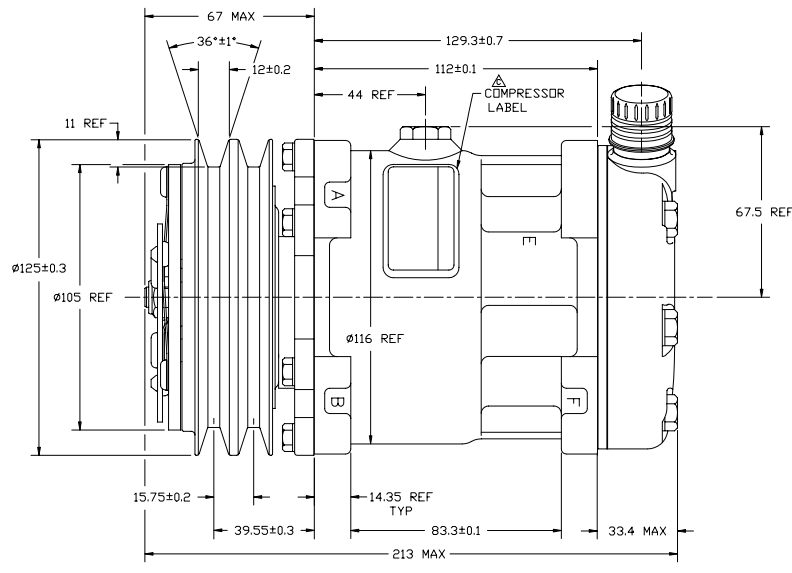
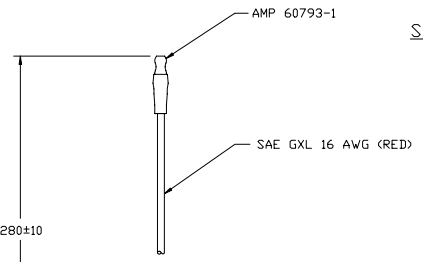
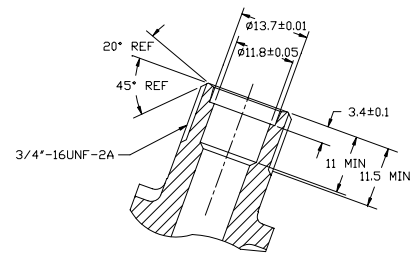
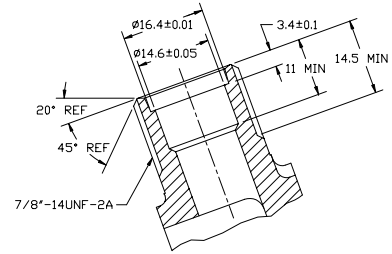
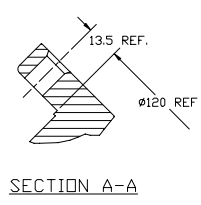


16 | 15 | 14 | 13 | 12 | 11 | 10 | 9 | 8 | 7 | 6 | 5 | 4 | 3 | 2 | 1

PCDN	REV	APPV DATE	REVISIONS	DVN	ESGN	CHK	APPV
538	Δ	05/06/94	CHANGED TO HARD NUMBER WAS ADD=6000	RJR	RJR	RJR	RLM
95803	Δ	05/06/94	ADDED PROPRIETARY NOTE AND UPDATED TO CURRENT STANDARDS	RJR	RJR	RJR	RLM
95543	Δ	05/06/94	CHANGED MODEL NUMBER (FORMER D64663 WAS 120HES.D64663)	RJR	RJR	RJR	RLM
99221	Δ	05/28/99	CHANGED FROM HONDULE TO SIPPLE FIELD COIL ASSEMBLY ADDED COMPRESSOR LABEL	RJR	RJR	RJR	RLM
99027 (200540)	Δ	11/06/01	UPDATED TO CURRENT TITLE BLOCK DIL. (SP-15) WAS OIL (SP-20)	RJR	RJR	RJR	RLM



CLOCKWISE ROTATION

COMPRESSOR SPECIFICATIONS

DISPLACEMENT PER REVOLUTION	1549 cc / rev. (9.5cuin. / rev.)
MAXIMUM ALLOWABLE R.P.M.	8000 R.P.M.
MAXIMUM ALLOWABLE CONTINUOUS R.P.M.	6000 R.P.M.
REFRIGERANT	R134a
OIL (SP-15)	135 cc (4.6 fl.oz.)
WEIGHT	7.4 kg (16.4 lb.)

CLUTCH SPECIFICATIONS

RATED VOLTAGE	DC 12V
BREAKAWAY TORQUE	3.5 kgf-m min. @ 12V
MINIMUM ENGAGEMENT VOLTAGE	7.5V @ AIR GAP 0.6mm REF
POWER CONSUMPTION	49 watts max.
BELT TYPE	A TYPE
MAXIMUM ALLOWABLE BELT TENSION	60 kgf per belt
PULLEY DIAMETER	Ø125mm (4.9 in.)
CLUTCH TYPE	STANDARD

DO NOT SCALE

REV. LEVEL	RELEASED FOR DESIGN DEVELOPMENT	<p>SANDEN INTERNATIONAL (U.S.A.), INC.</p>
CHK	R. Williams	
APPV.	R. Williams	<p>This drawing and the information contained herein are CONFIDENTIAL and PROPRIETARY to Sanden International (U.S.A.), Inc. and are received in CONFIDENCE and shall not be used, copied, or disclosed to others without the written permission of Sanden International (U.S.A.), Inc.</p>
DATE	11/16/93	
REV. LEVEL	RELEASED FOR DESIGN VALIDATION	INTERPRETATION OF THIS DRAWING PER ASME Y14.5M-1994
APPV.	R. Williams	THIRD ANGLE PROJECTION
DATE	11/16/93	
REV. LEVEL	RELEASED FOR PRODUCTION VAL. 2	MATERIAL: -
APPV.	R. Williams	NAME
DATE	11/16/93	
REV. LEVEL	RELEASED FOR PRODUCTION	COMPRESSOR OUTLINE
APPV.	R. Williams	DWG. NO.
DATE	11/16/93	
REV. LEVEL	RELEASED FOR PRODUCTION	4663-6000
APPV.	R. Williams	REV. D
DATE	11/16/93	

16 | 15 | 14 | 13 | 12 | 11 | 10 | 9 | 8 | 7 | 6 | 5 | 4 | 3 | 2 | 1