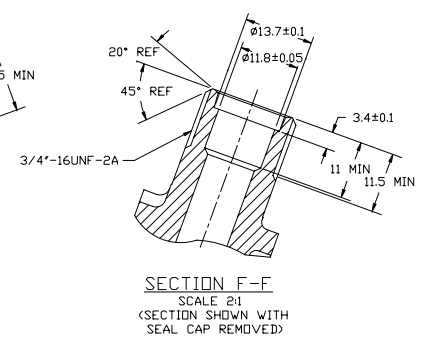
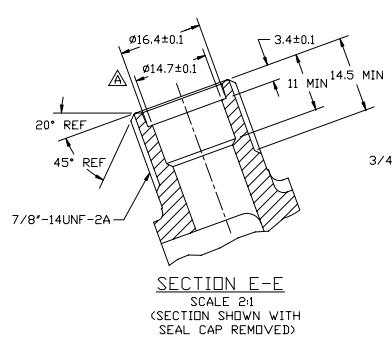
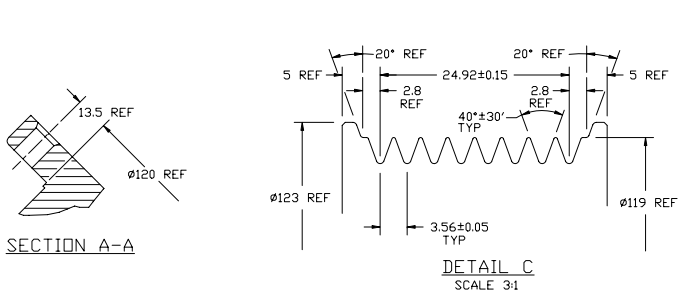
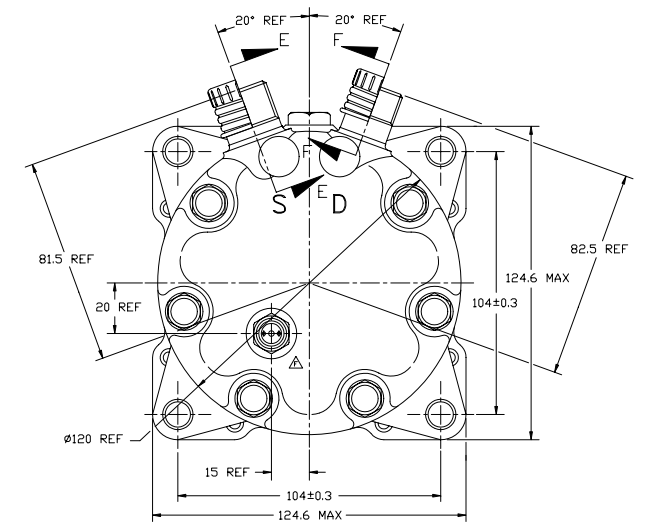
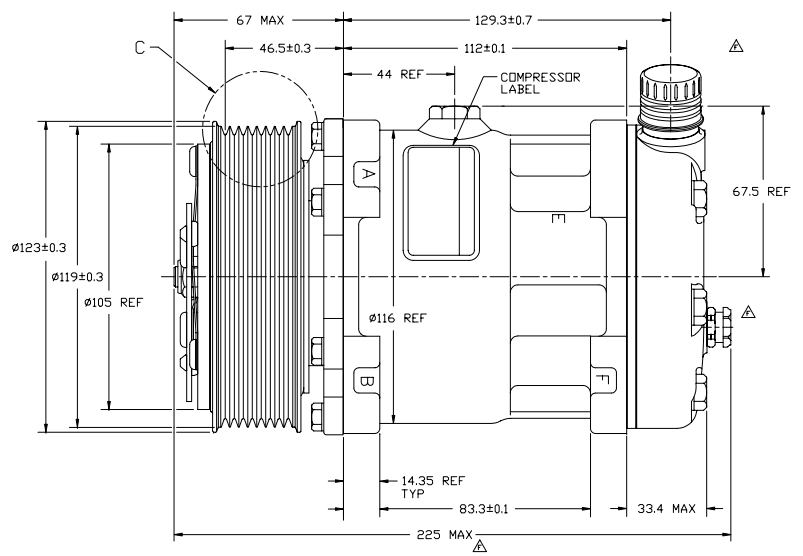
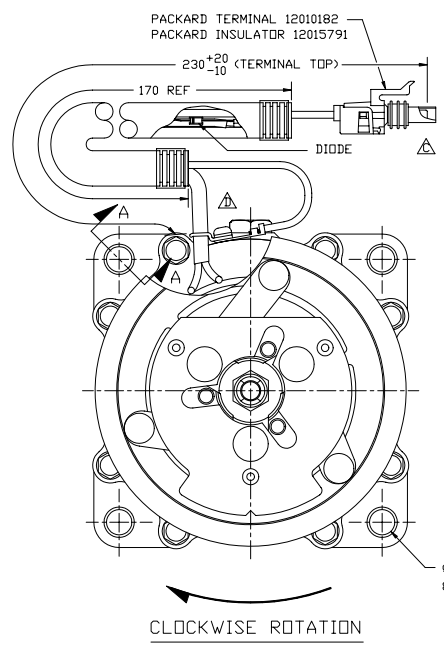
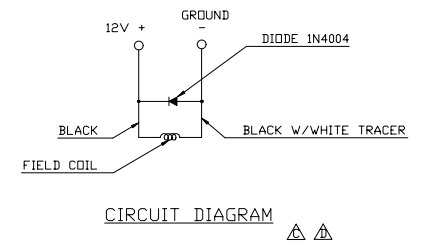


16 | 15 | 14 | 13 | 12 | 11 | 10 | 9 | 8 | 7 | 6 | 5 | 4 | 3 | 2 | 1



PCDN	REV	APPV DATE	REVISIONS	DVN	ESGN	CHK	APPV
94187	Δ	6/15/94	#14.7±0.1 WAS #14.6±0.025	Δ	Δ	Δ	Δ
95003	Δ		ADDED PROPRIETARY NOTE AND UPDATED TO CURRENT STANDARDS	Δ	Δ	Δ	Δ
96053	Δ		TERMS # WAS 10420559	Δ	Δ	Δ	Δ
96385	Δ	5/12/98	CHANGED CORE ASSY. TO CON P/N 614410495	Δ	Δ	Δ	Δ
99253	Δ	5/27/99	CHANGED FROM MENSOLE TO DOUBLE FIELD COIL ASSEMBLY. CHANGED P/N FROM 462-4470 TO 4967-6470	Δ	Δ	Δ	Δ
000084	Δ	6/21/00	CHANGED FROM 1/2" MAX. DIS. MAX WAS 240 MAX. UPDATED TITLE BLOCK.	Δ	Δ	Δ	Δ
99607	Δ			Δ	Δ	Δ	Δ
200240	Δ	11/12/00	OIL. CSP-15 WAS OIL. CSP-20	Δ	Δ	Δ	Δ



**COMPRESSOR SPECIFICATIONS**

DISPLACEMENT PER REVOLUTION	154.9 cc / rev. ( 9.5cu.in. / rev. )
MAXIMUM ALLOWABLE R.P.M.	8000 R.P.M.
MAXIMUM ALLOWABLE CONTINUOUS R.P.M.	6000 R.P.M.
REFRIGERANT	R134a
OIL ( SP-15 )	270 cc ( 9.1 fl.oz. )
WEIGHT	6.8 kg ( 15.1 lb. )

**CLUTCH SPECIFICATIONS**

RATED VOLTAGE	DC 12V
BREAKAWAY TORQUE	3.5 kgf-m min. @ 12V
MINIMUM ENGAGEMENT VOLTAGE	7.5V @ AIR GAP 0.6mm REF
POWER CONSUMPTION	49 watts max.
BELT TYPE	PV8 TYPE
MAXIMUM ALLOWABLE BELT TENSION	120 kgf
PULLEY DIAMETER	Ø119mm ( 4.69 in. )
CLUTCH TYPE	HEAVY DUTY

REV. LEVEL	RELEASED FOR DESIGN DEVELOPMENT	<p><b>SANDEN</b> SANDEN INTERNATIONAL (U.S.A.), INC.</p>	DATE	3/16/94	SCALE	1:1	UNIT	METRIC
CHK	APPROVED		DATE	3/16/94	SCALE	1:1	UNIT	METRIC
DVN	DESIGNED	<p>This drawing and the information contained herein are CONFIDENTIAL and PROPRIETARY to Sanden International (U.S.A.), Inc. and are released in CONFIDENCE and shall not be used, copied, or disclosed to others without the written permission of Sanden International (U.S.A.), Inc.</p> <p>INTERPRETATION OF THIS DRAWING PER ASME Y14.5M-1994</p>	DATE	3/16/94	THIRD ANGLE PROJECTION		SIZE	D
APPV	APPROVED		DATE	3/16/94	MATERIAL			
REV. LEVEL	RELEASED FOR DESIGN VALIDATION	<p>THIRD ANGLE PROJECTION</p>	DATE	3/16/94	NAME	COMPRESSOR		
APPV	APPROVED		DATE	3/16/94	NAME	COMPRESSOR		
REV. LEVEL	RELEASED FOR PRODUCTION VAL'S	<p>THIRD ANGLE PROJECTION</p>	DATE	3/16/94	DWG. NO.	4660-6000		
APPV	APPROVED		DATE	3/16/94	DWG. NO.	4660-6000		
REV. LEVEL	RELEASED FOR PRODUCTION	<p>THIRD ANGLE PROJECTION</p>	DATE	3/16/94	REV	F		
APPV	APPROVED		DATE	3/16/94	REV	F		

**DO NOT SCALE**

16 | 15 | 14 | 13 | 12 | 11 | 10 | 9 | 8 | 7 | 6 | 5 | 4 | 3 | 2 | 1