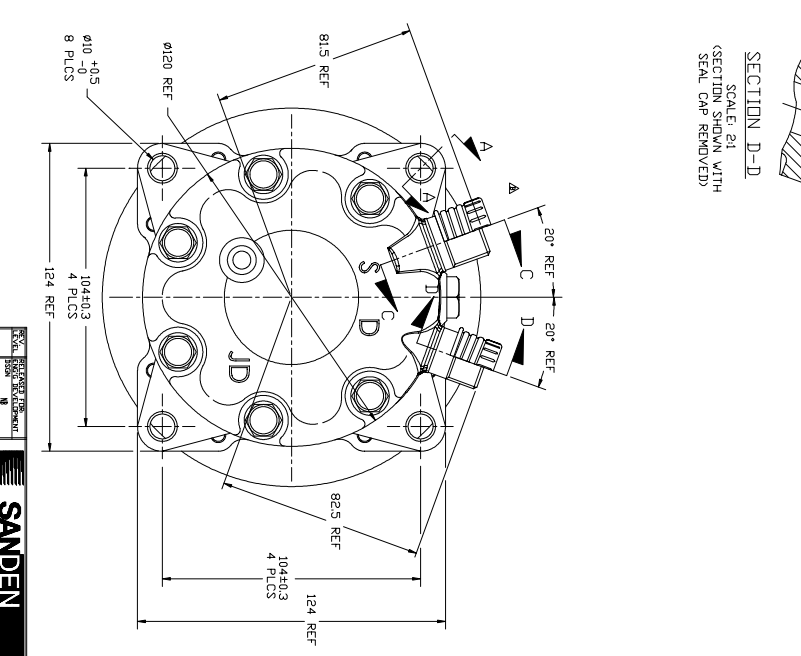
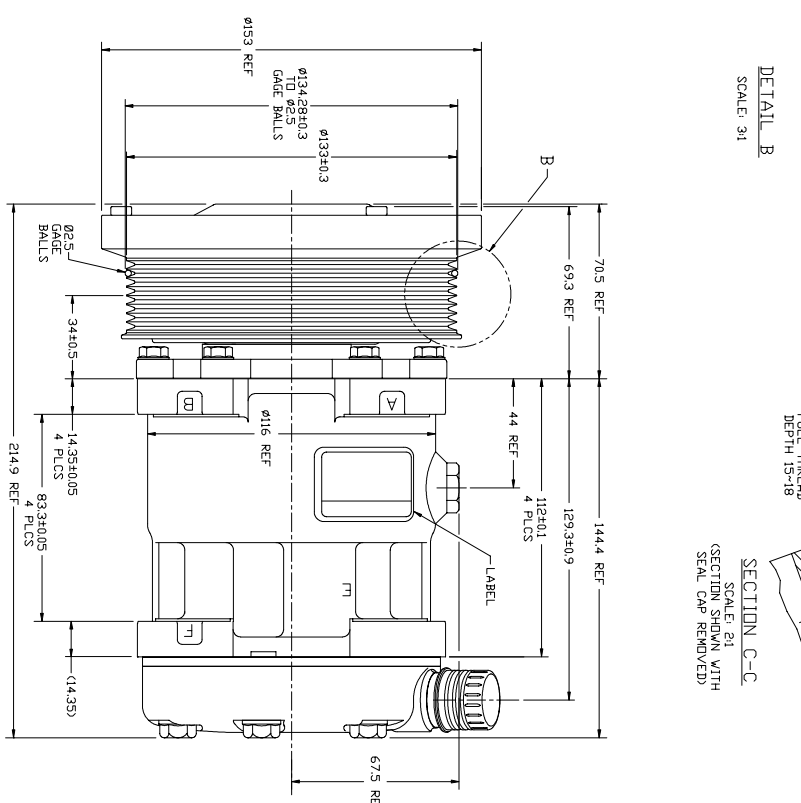
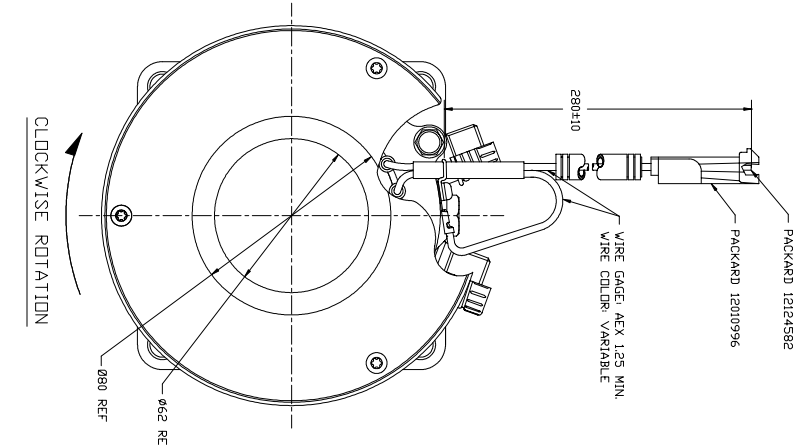
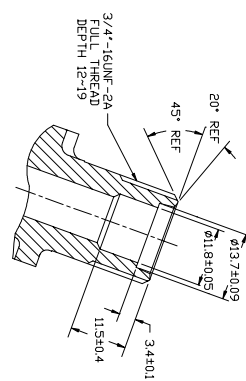
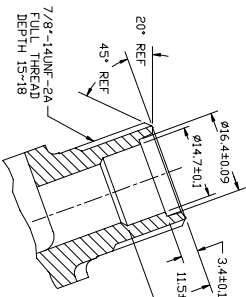
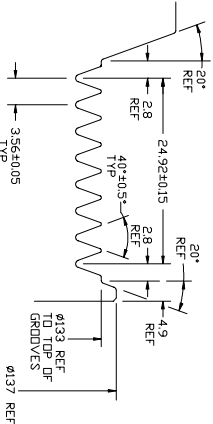
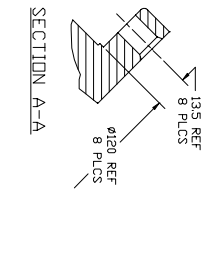


REV.	DATE	DESCRIPTION	BY	CHKD	APP'D
A	1/15/08	INITIAL RELEASE	TG	MA	SN
B	1/15/08	MODIFIED TO REFLECT PARTS	TG	MA	SN
C	1/15/08	REVISIONS TO C.D. (K&A) 788-0480	TG	MA	SN



**COMPRESSOR SPECIFICATIONS (REF.)**

DISPLACEMENT PER REVOLUTION	154.9	cc / rev. ( 9.5scuin. / rev. )
MAXIMUM ALLOWABLE R.P.M.	4000	R.P.M.
MAXIMUM ALLOWABLE CONTINUOUS R.P.M.	4000	R.P.M.
REFRIGERANT	R134a	
OIL ( S.P.-15 )	270	cc ( 91 fl. oz. ) REF

**CLUTCH SPECIFICATIONS**

RATED VOLTAGE	DC 24V
BREAKAWAY TORQUE	3.5 kgf-cm min. @ 24V
MINIMUM ENGAGEMENT VOLTAGE	15V AT AIR GAP 0.6mm REF
POWER CONSUMPTION	40 WATTS MAX.
BELT TYPE	V8 TYPE
MAXIMUM ALLOWABLE BELT TENSION	150 kgf
PULLEY DIAMETER	Ø133mm ( 5.2 in. )
CLUTCH TYPE	SEALED HEAVY DUTY

- NOTES:**
1. THIS MODEL INCLUDES MAIN SHAFT KEY AND KEVED STANDARD APPARATURE AT TIME OF INITIAL RELEASE.
  2. DIMENSIONS ARE TO VERTICAL SHARP CORNERS UNLESS OTHERWISE SPECIFIED.

**SANDEN METRIC**

SCALE: 1:1

COMPRESSOR

4312-6000

REV B