

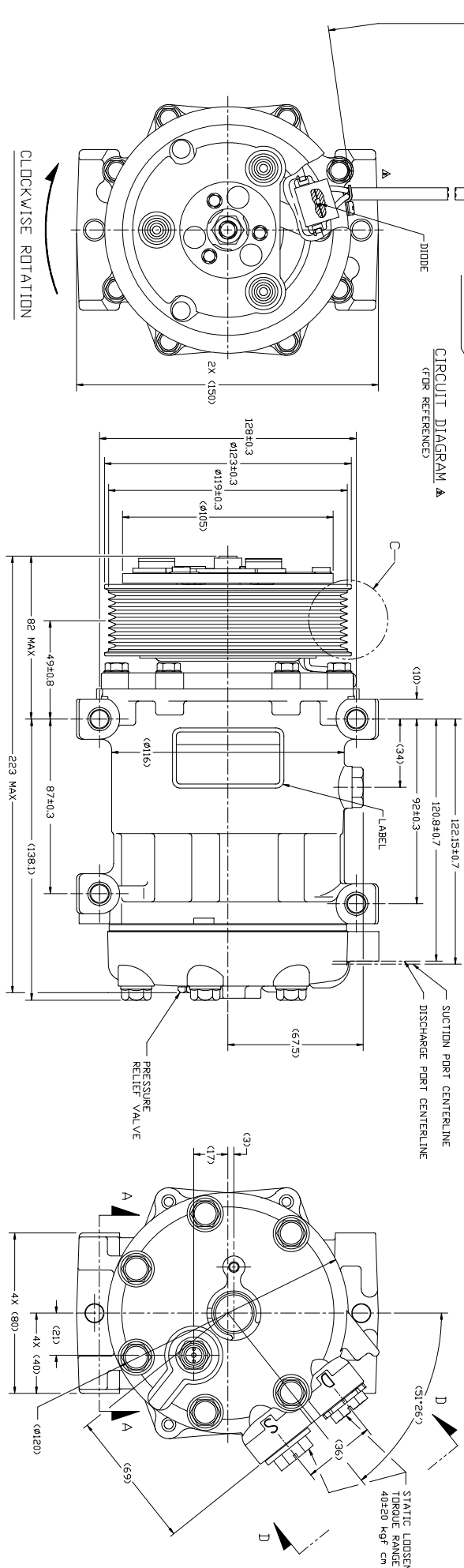
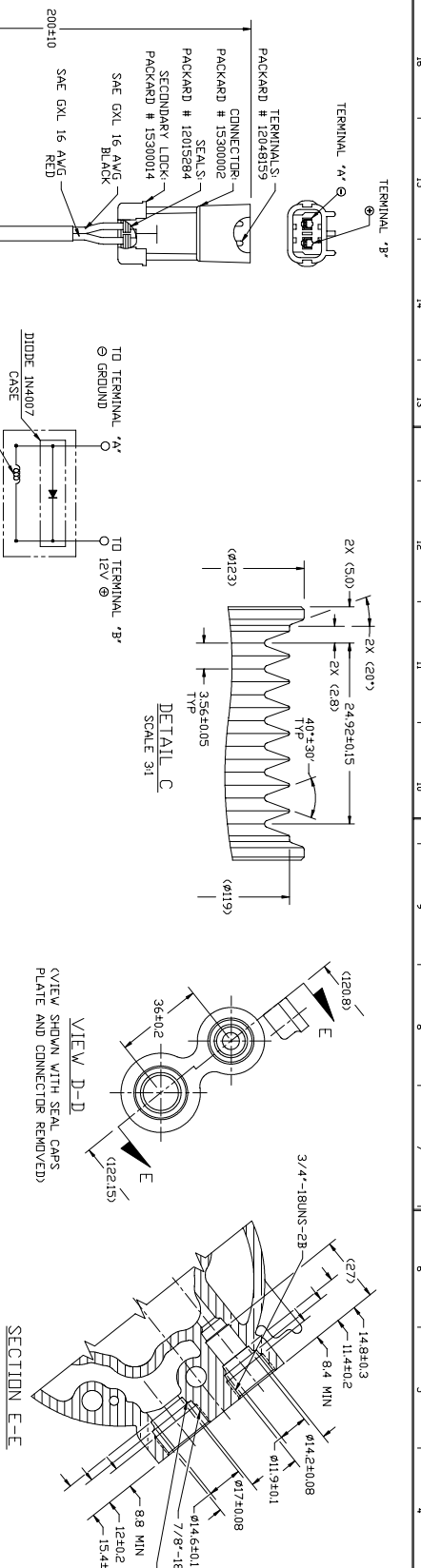
REV	DATE	BY	CHK	APPV
1	1/23/08			

REV	DATE	BY	CHK	APPV
1	1/23/08			

REV	DATE	BY	CHK	APPV
1	1/23/08			

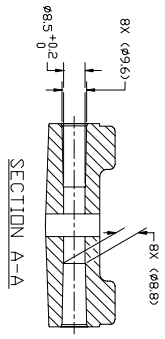


COMPRESSOR SPECIFICATIONS (REF)

DISPLACEMENT PER REVOLUTION	154.9 cc / rev. ( 9.5cuin. / rev. )
MAXIMUM ALLOWABLE RPM	6000 RPM
MAXIMUM ALLOWABLE CONTINUOUS RPM	4000 RPM
REFRIGERANT	R134a
OIL ( SP-15 )	300 cc ( 10.1 fl. oz. )

CLUTCH SPECIFICATIONS (REF)

RATED VOLTAGE	DC 12V
BREAKAWAY TORQUE	3.5 kgf-m min. @ 12V
MINIMUM ENGAGEMENT VOLTAGE	7.5V @ AIR GAP 0.6mm
POWER CONSUMPTION	49 watts max.
BELT TYPE	PV8 TYPE
MAXIMUM ALLOWABLE BELT TENSION	120 kgf
PULLEY DIAMETER	∅119mm (4.68 in.)
CLUTCH TYPE	HEAVY DUTY



NOTE: THIS PRODUCT MEETS THE REQUIREMENTS OF SAE J1408, J1409, J1410, J1411, J1412, J1413, J1414, J1415, J1416, J1417, J1418, J1419, J1420, J1421, J1422, J1423, J1424, J1425, J1426, J1427, J1428, J1429, J1430, J1431, J1432, J1433, J1434, J1435, J1436, J1437, J1438, J1439, J1440, J1441, J1442, J1443, J1444, J1445, J1446, J1447, J1448, J1449, J1450, J1451, J1452, J1453, J1454, J1455, J1456, J1457, J1458, J1459, J1460, J1461, J1462, J1463, J1464, J1465, J1466, J1467, J1468, J1469, J1470, J1471, J1472, J1473, J1474, J1475, J1476, J1477, J1478, J1479, J1480, J1481, J1482, J1483, J1484, J1485, J1486, J1487, J1488, J1489, J1490, J1491, J1492, J1493, J1494, J1495, J1496, J1497, J1498, J1499, J1500.

1. THIS PRODUCT MEETS THE REQUIREMENTS OF SAE J1408, J1409, J1410, J1411, J1412, J1413, J1414, J1415, J1416, J1417, J1418, J1419, J1420, J1421, J1422, J1423, J1424, J1425, J1426, J1427, J1428, J1429, J1430, J1431, J1432, J1433, J1434, J1435, J1436, J1437, J1438, J1439, J1440, J1441, J1442, J1443, J1444, J1445, J1446, J1447, J1448, J1449, J1450, J1451, J1452, J1453, J1454, J1455, J1456, J1457, J1458, J1459, J1460, J1461, J1462, J1463, J1464, J1465, J1466, J1467, J1468, J1469, J1470, J1471, J1472, J1473, J1474, J1475, J1476, J1477, J1478, J1479, J1480, J1481, J1482, J1483, J1484, J1485, J1486, J1487, J1488, J1489, J1490, J1491, J1492, J1493, J1494, J1495, J1496, J1497, J1498, J1499, J1500.

DD NOT SCALE

4083-6000

COMPRESSOR

SAE J1408, J1409, J1410, J1411, J1412, J1413, J1414, J1415, J1416, J1417, J1418, J1419, J1420, J1421, J1422, J1423, J1424, J1425, J1426, J1427, J1428, J1429, J1430, J1431, J1432, J1433, J1434, J1435, J1436, J1437, J1438, J1439, J1440, J1441, J1442, J1443, J1444, J1445, J1446, J1447, J1448, J1449, J1450, J1451, J1452, J1453, J1454, J1455, J1456, J1457, J1458, J1459, J1460, J1461, J1462, J1463, J1464, J1465, J1466, J1467, J1468, J1469, J1470, J1471, J1472, J1473, J1474, J1475, J1476, J1477, J1478, J1479, J1480, J1481, J1482, J1483, J1484, J1485, J1486, J1487, J1488, J1489, J1490, J1491, J1492, J1493, J1494, J1495, J1496, J1497, J1498, J1499, J1500.