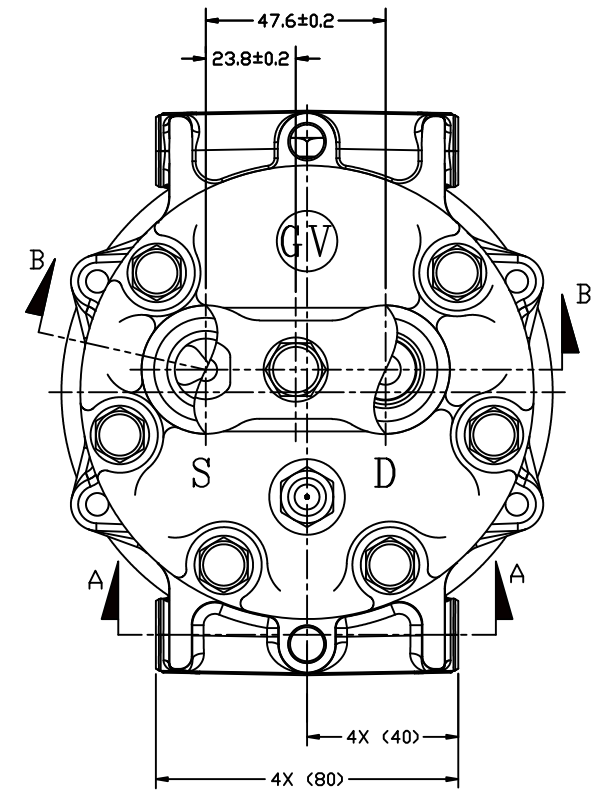
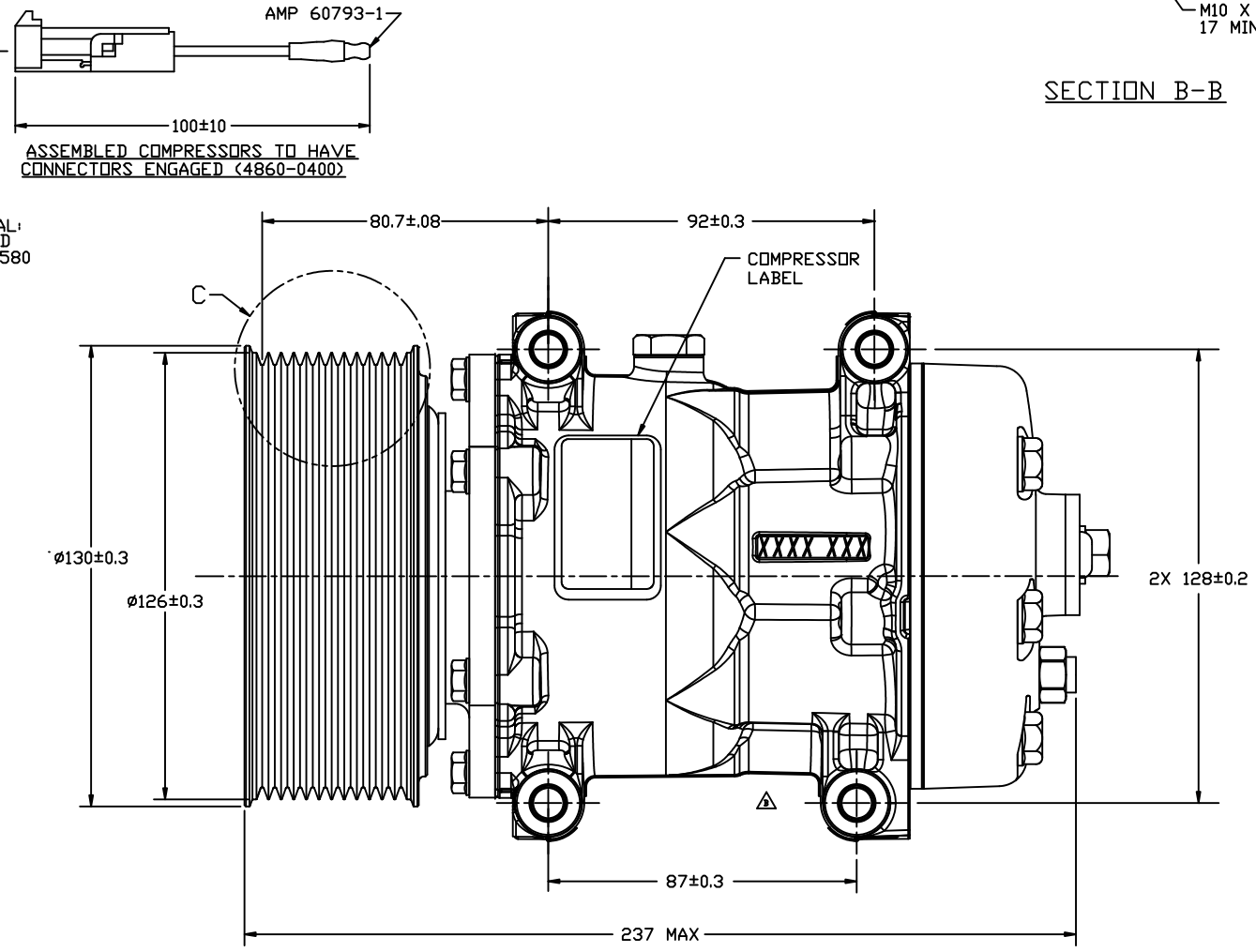
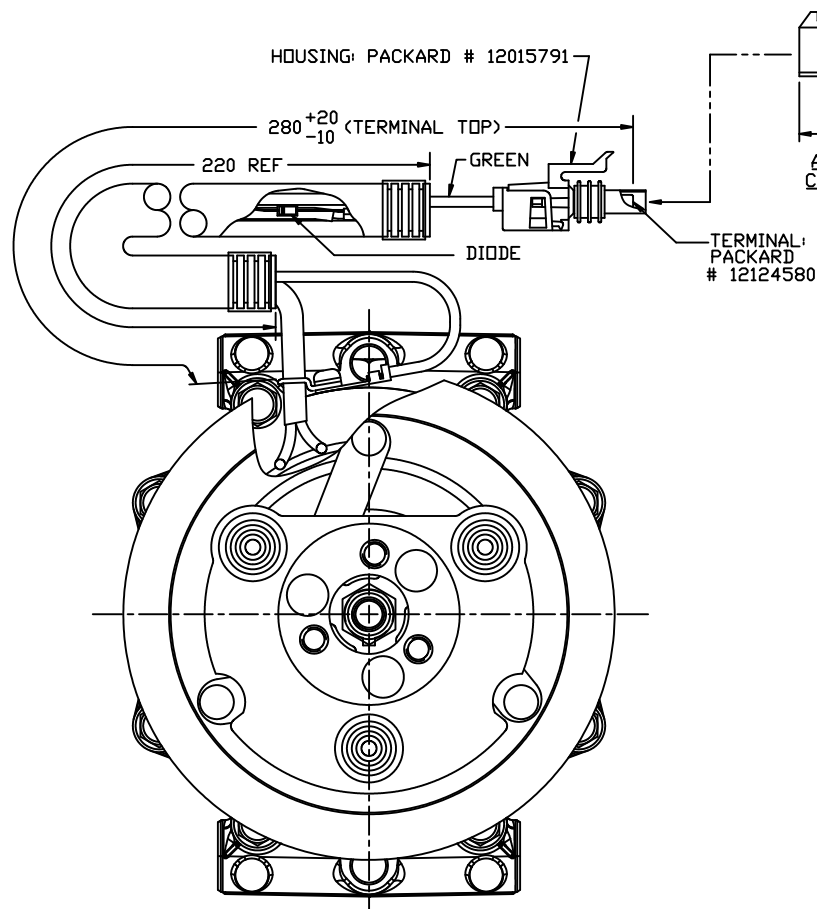
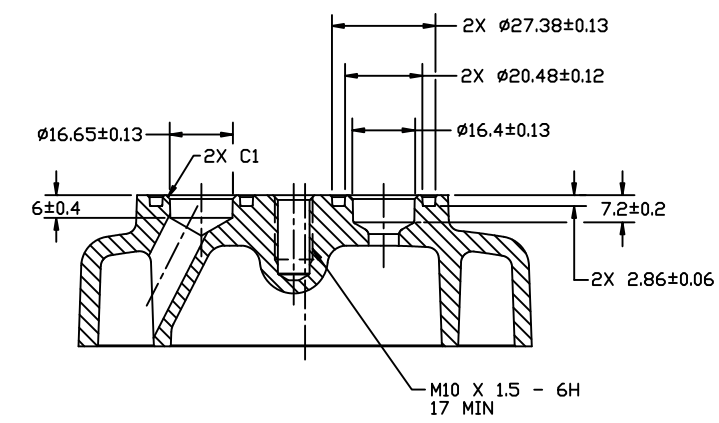
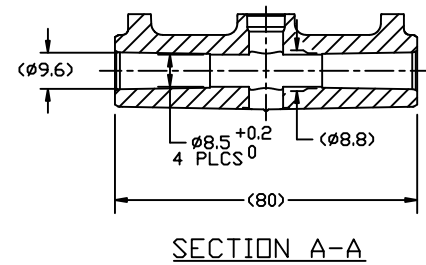
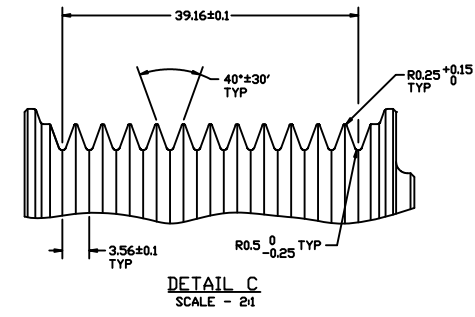


PDCN	REV	APPV DATE	REVISIONS	DWN	DSGN	CHK	APPV
9877	Δ	4/3/12	INITIAL ISSUE				
			CYL. BLOCK 4648-0010 WAS 4366-0010	NB	NB	RR	HF

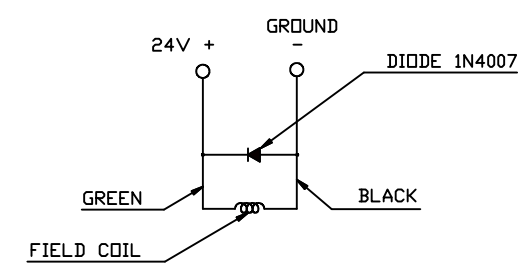


**COMPRESSOR SPECIFICATIONS**

DISPLACEMENT PER REVOLUTION	154.9 cc
MAXIMUM ALLOWABLE SPEED	8000 R.P.M.
MAXIMUM ALLOWABLE CONTINUOUS SPEED	6000 R.P.M.
REFRIGERANT	R134a
OIL ( SP-15 )	300 cc

**CLUTCH SPECIFICATIONS**

RATED VOLTAGE	DC 24V
BREAKAWAY TORQUE	3.5 kgf-m MIN @ 24V
MINIMUM ENGAGEMENT VOLTAGE	7.5V @ AIR GAP 0.6mm
POWER CONSUMPTION	49 W MAX
BELT TYPE	PV12
MAXIMUM ALLOWABLE BELT TENSION	120 kgf
PULLEY DIAMETER	ø126 mm
CLUTCH TYPE	HEAVY DUTY



CIRCUIT DIAGRAM

DO NOT SCALE

REV. LEVEL	RELEASED FOR	DESIGN	SCALE REF	PLOTTED SCALE REF	METRIC
A	RELEASED FOR ENGR DEVELOPMENT	A. ARMENDARIZ	1:1	1:1	METRIC
A	RELEASED FOR DESIGN VALIDATION	A. ARMENDARIZ			
A	RELEASED FOR PRODUCTION VAL'D.	A. ARMENDARIZ			
A	RELEASED FOR PRODUCTION	A. ARMENDARIZ			

**SANDEN**  
SANDEN INTERNATIONAL (U.S.A.), INC.

INTERPRETATION OF THIS DRAWING PER ASME Y14.5M-1994  
THIRD ANGLE PROJECTION

**COMPRESSOR SD7H15 ENHANCED CAPACITY**

DWG. NO. 4051-6000